

# FLOJET®

# FLOJET®

No 29

Recreation Vehicle Pumps & Accessories

Earned and awarded the ISO 9001 Certification for its quality system, ITT Flojet has been committed to providing quality products and services worldwide. With over 30 years experience, FLOJET is dedicated to serving you, the customer, with representatives worldwide, with an additional sales and manufacturing facility in the United Kingdom.

## Flojet



**Flojet** 1-800-2 FLOJET  
20 Icon, Foothill Ranch, CA 92610 USA  
Tel: +1 949 859 4945 Fax: +1 949 859 1153

**Flojet**  
Bingley Road, Hoddesdon, Hertfordshire EN11 0BU UK  
Tel: +44 (0) 1992 450 145 Fax: +44 (0) 1992 467 132

**Fluid Products Canada,**  
55 Royal Road, Guelph, Ontario N1H 1T1 CANADA  
Tel: +1 519 821 1900 Fax: +1 519 821 2569

**NHK Jabsco Co Ltd,**  
3-21-10, Shin-Yokohama, Kohoku-ku, Yokohama 222 JAPAN  
Tel: +81 (0) 45 475 8906 Fax: +81 (0) 45 475 8908

**Jabsco GmbH,**  
Oststraße 28, 22844 Norderstedt GERMANY  
Tel: +49 (0) 40 53 53 73 0 Fax: +49 (0) 40 53 53 73 11

**Jabsco Marine Italia S.r.l.,**  
Via Tommaseo, 6, 20059 Vimercate, Milano ITALY  
Tel: +39 039 6852323 Fax: +39 039 666307

Go RVing  
Life's A Trip™

Your Local Flojet Distributor

Discover Flojet at [www.flojet.com](http://www.flojet.com)

Warranty: All products of the company are sold and all services of the company are offered subject to the company's warranty and terms and conditions of sale, copies of which will be furnished upon request

© Copyright 2005 ITT Industries

P/N F100-087 Rev C 10/2005







Company Profile & Contents

Flojet, Jabsco, and Rule, all divisions of ITT Industries, join to offer the highest quality products available in the Recreation Vehicle market place.

Constant Pressure Water Systems

Platinum VSD™ and Sensor VSD.....1
Quiet Pump™ Controller.....1

Water System Pumps

Automatic & Manual Demand Pumps
Triplex .....2
LF 12 Series Pumps .....2
Quad II Water System Pumps Quiet Quad
4406 and 4306 Series Pumps and Parts .....3
Deluxe Water System 3.5 gpm (13.5 lpm)
NEW! Premium Model and Parts .....4
Duplex Water System Pumps
2100 Series Pumps and Parts .....4
Premium Plus 4.5 gpm (17 lpm) Water System Pumps
4325 Series Heavy Duty Water System and Parts .....5
Electric Pump and Faucet.....5

High Volume Water System Pumps

2840 Series and Parts .....6
NEW! 2880 Series .....6

Automatic Water System Pumps

36950 Series and Parts .....7

Accumulator Tanks

30573, 18810, 12573 Models.....8

Toilets and Macerator Pumps

NEW! Portable RV Waste Pump .....9
18550 Macerator Pump.....9
NEW! 37075 Designer Style Electric Toilets .....9

Accessories

NEW! Model 1740 Inlet Strainers, Water Pressure Regulators,
High Pressure Check Valve .....10

Quad Port Fittings

.....11

Remote Control Searchlights

NEW! 8055, 8035 and 8046 Models.....12
NEW! RV Broad Beam, 62026 Models &
Wiring Cable Accessories .....13

Work, Flood and Patio Lights

45960 and 45900 Models.....14

Oil Drain and Heater Pumps

NEW! Engine Oil Change System .....15
Compact Magnetic Drive Centrifugal Sealless Heater Pump .....15

Bottled Water Dispenser

.....16

Danforth™ Compasses

Danforth™ Quest Compasses.....17

Sudbury® Sealants

Sudbury® Sealants .....17

Sudbury® Boat/RV Care Products

One Step Fiberglass Restorer and Wax
Aqua Fresh!™, Boat Zoap™ .....18

Electric Winches & Accessories

Winches, Cable Disconnect Kits, Roller Fairlead Kits and
Pulley Blocks .....19

PEXtite™ Plumbing System .....20-28

Product Number Index .....29

usa
Flojet, 20 Icon, Foothill Ranch, CA 92610 USA
Tel: +1 949 859 4945 Fax: +1 949 859 1153

uk
Jabsco, Bingley Road, Hoddesdon, Hertfordshire EN11 0BU
Tel: +44 (0) 1992 450 145 Fax: +44 (0) 1992 467 132

canada
Fluid Products Canada, 55 Royal Road, Guelph, Ontario N1H 1T1
Tel: +1 519 821 1900 Fax: +1 519 821 2569

japan
NHK Jabsco Co Ltd, 3-21-10, Shin-Yokohama, Kohoku-ku, Yokohama 222
Tel: +81 (0) 45 475 8906 Fax: +81 (0) 45 475 8908

germany
Jabsco GmbH, Oststraße 28, 22844 Norderstedt
Tel: +49 (0) 40 53 53 73 0 Fax: +49 (0) 40 53 53 73 11

italy
Jabsco Marine Italia S.r.l., Via Tommaseo, 6, 20059 Vimercate, Milano
Tel: +39 039 6852323 Fax: +39 039 666307



CE certified models are available.
Add prefix "R" to pump model number when ordering (i.e. R4325-143A).



## Constant Pressure Water Systems

### 5 Chamber Platinum VSD™

Five chamber positive displacement diaphragm design. Self-priming up to 10 feet (3 m) suction lift. Pump able to run dry without damage. Removable port adapters. Permanent magnet, double ball bearing armature. Electronic speed control built into base housing.

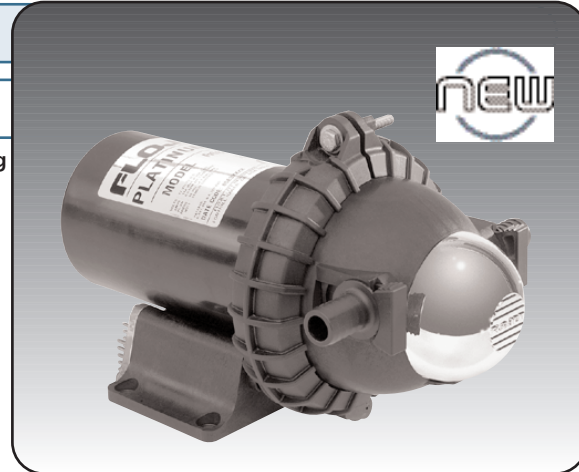
- Variable speed control
- Solid state pressure sensor
- Smooth operation / no cycling
- 12VDC and 24VDC models available
- Controls flow and maintains pressure by changing motor speed
- Speeds up as demand increases
- Self-priming / runs dry
- No accumulator tank needed
- Includes high flow inlet strainer
- Protected under U.S. Patents #6 607 360 and 6 729 849
- Other patents pending
- ISO 8846 MARINE (Ignition protection)

**Fitting:** Strainer and ports included.  
**Weight:** R6806145 - 8.0 lb (3.6 kg)  
 R6806345 - 8.0 lb (3.6 kg)

**R6806145** Sensor VSD™ 6, 12 Volt dc.  
**R6806345** Sensor VSD™ 6, 24 Volt dc.  
**81000 401** Instruction Sheet.  
**20409 043** Service Kit.

**Note:** The VSD electronics require a battery installed in the DC power supply when using an AC to DC converter or battery charging system.

**CE Certified CSA Listed**



Model	Volts dc	Open Flow gpm (lpm)	Pressure On/Off	Amps @ 10 psi (0.7 bar)	Strainer Included
R6806145	12V dc	6	60 psi	18	Yes
R6806345	24V dc	6	60 psi	9	Yes

### Sensor VSD™

New pressure sensor controlled. Amp draw reduces as flow reduces to conserve energy, ranging from less than 1 amp to a maximum of 12 amps.

- Runs silently under normal use.
- Unique constant water pressure - NO pressure switch.
- Electronically controlled variable flow.
- Up to 4.5 gpm (17 lpm) output.
- Self priming up to 10ft (3m).
- Gives constant flow and hot water mix.
- Eliminates accumulator tank.
- Automatically adjusts to 12 Volt dc or 24 Volt dc power input.
- Conserves battery power - uses lower amps at lower flow.
- True sensor regulated water pressure.
- Thermal overload protection.
- Diaphragm design allows extended dry running.

**Fitting:** Strainer and ports included.  
**Size:** R4515 - 9.0" L x 6.3" W x 3.75" H (22cm x 16cm x 9.5cm)  
 R4525 - 10.3" L x 6.3" W x 3.75" H (25.2cm x 16cm x 9.5cm)  
**Weight:** R4515 - 4.3 lb (2.0 kg)  
 R4525 - 6.3 lb (3.0 kg)

**R4515 743A** Sensor VSD™ 3.7, 12 - 24 Volt dc.  
**R4525 743A** Sensor VSD™ 4.5, 12 - 24 Volt dc.  
**81000 346** Instruction Sheet.  
**20409 043** Service Kit.

**Note:** Sensor VSD™ pumps require a battery to be installed in the dc power supply when using an ac to dc converter or battery charging system.

**CE Certified CSA Listed**



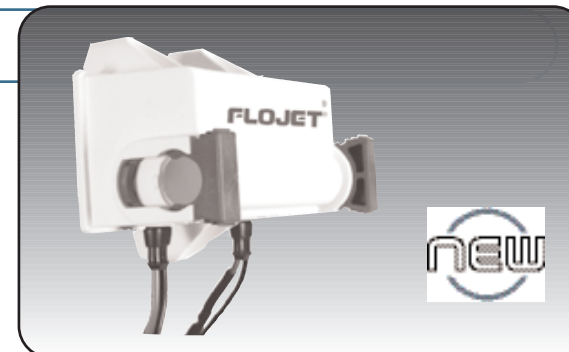
Model	Volts dc	Open Flow gpm (lpm)	Pressure On/Off	Amps @ 10 psi (0.7 bar)	Strainer Included
R4515	12V -	0-3.7	25/35 psi	9	Yes
	24V dc	(0-14)	1.7/2.4 bar		
R4525	12V -	0-4.5	30/40 psi	7	Yes
	24V dc	(0-17)	2.1/2.8 bar		

### Quiet Pump™ Controller

Converts switch type water pressure pumps to variable speed drive VSD

- Greatly Reduces Noise.
- Eliminates pulsation.
- Maintains smooth water flow.
- Regulates pressure at faucets.
- Auto-Alignment . Sense pump pressure automatically.
- Operates on pumps with pressures from 20 - 60 PSI (1.4 bar - 4.2 bar).
- Easy installation
- Works on most brands of switched diaphragm pumps.

**Size:** 3" L x 4.5" W x 3.5" H  
**Weight:** 1.5 lb (0.68 kg)  
**Model:** 01770 100 - 12 / 24 VSD



# Sensor VSD™ Water System Pumps



# Water System Pumps

## Automatic and Manual Demand Pumps

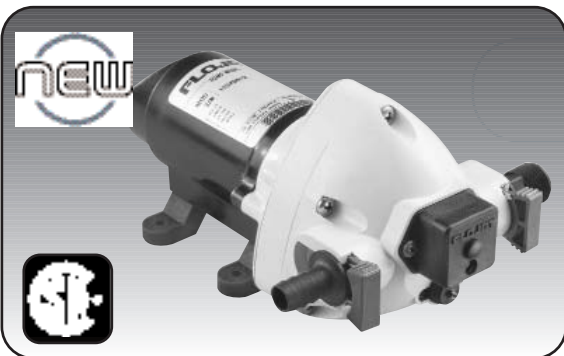


### The Triplex 2.9 Water System, New from FLOJET

- Smooth flow and quiet operation for up to 5 fixtures
- Designed to fulfill the water pressure requirements for the majority of recreational vehicles
- Smooth flow from 0.7 gpm to 2.9 gpm (2.6 to 11.0 lpm)
- Built-in "Pulsation Eliminator" to reduce the cycling and noise
- No need for an accumulator tank
- Runs dry and self-primes to 9 ft. (3m)
- Easy to install, winterize and service

**Model:** 03526  
**Diaphragm:** Santoprene  
**Valves:** EPDM Rubber  
**Size:** 4-3/4" H x 6" W x 9" L (121x 152 x 229 mm)  
**Weight:** 3.5 lb. (1.6 kg)  
**Pump Head kit:** 20406 045A  
**Inst. Sheet:** 81000 384

Model	Volts dc	Open Flow gpm (lpm)	Pressure On/Off psi (bar)	Amps @ 10 psi (0.7 bar)	Strainer Included
03526 144	12	2.9 (11)	50 (3.45)	4.4	No
R3626 344	24	2.9 (11)	40 (2.76)	3	No

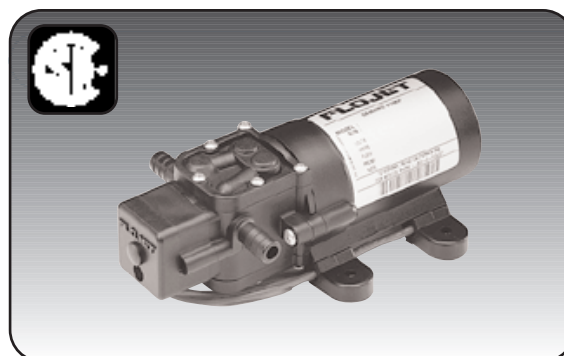


### The Triplex 2.0 Caravan/RV Pump, New from FLOJET

- Smooth flow from 0.65 to 2.0 gpm (2.5 to 8 lpm)
- Pressure controlled to below 25 psi (1.7 bar)
- New Feature: Built-in pulsation eliminator
- Runs dry without damage
- Self priming to over 6 feet (2m)
- Includes plug-in ports for easy installation; threaded and hose barb
- CE Certified

**Diaphragm:** Santoprene  
**Valves:** EPDM Rubber  
**Size:** 4-3/4" H x 6" W x 9" L (121x 152 x 229 mm)  
**Weight:** 3.5 lb. (1.6 kg)  
**Pump Head kit:** 20406 048A  
**Inst. Sheet:** 81000 384

Model	Volts dc	Open Flow gpm (lpm)	Pressure On/Off psi (bar)	Amps @ 10 psi (0.7 bar)	Strainer Included
R3426 148	12	2.0 (8.0)	25 (1.7)	3.5	No
R3426 348	24	2.0 (8.0)	25 (1.7)	1.7	No



### LF-12 Series Pumps

- Compact automatic demand water system pump
- Supplies up to 3 fixtures, one or two at a time
- Built-in pressure switch auto-matically starts and stops pump when faucet is opened and closed
- Self-priming so pump can be located above water tank
- Runs dry for extended periods of time
- Built-in thermal protector
- Also available without switch for manual application
- IAPMO and CSA listed

**Size:** 2-1/4" H x 3-1/2" W x 6-1/4" L (58 x 89 x 157 mm)  
**Weight:** 1.3 lb (.6 kg)  
**Inst. Sheet:** 81000 309

Model	Volts dc	Open Flow gpm (lpm)	Pressure On/Off psi (bar)	Amps @ 10 psi (0.7 bar)	Strainer Included
LF122 202	12Vdc	1.1 (4.3)	22/35 psi (1.5/2.4 bar)	1.9	No
LF122 202	12Vdc	1.1 (4.3)	N/A	1.9	No



# Water System Pumps

## Quad II Water System Pumps 'Quiet Quad'

### 4406 Series Pumps with Bypass

- Includes bypass valve which greatly reduces pulsating water and pressure switch chatter
- Smooth flow from 1 gpm to over 3.2 gpm (3.8 to over 12.1 lpm)
- Eliminates the need for an accumulator tank
- Designed for up to 5 fixtures
- Runs dry without harm to the pump
- Easy to install, service and winterize
- Includes plug in ports for easy installation:  
Two 1/2"-14 straight pipe ports  
Two 1/2"-(13mm) hose barb ports
- Install a Flojet water strainer to protect pump from debris (not included, see page 9)
- IAPMO & CSA listed (12 Volt dc)

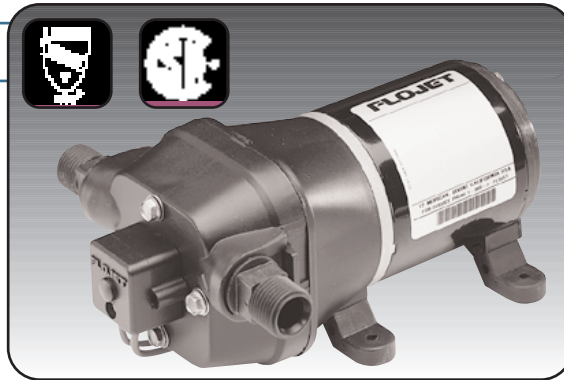
**Size:** 3.75" H x 6.3" W x 9.9" L  
(95 x 160 x 252 mm)

**Weight:** 3.9 lb. (1.8 kg.)

**Pressure:** 22 - 35 psi  
(1.5 - 2.4 bar)

**Service kit:** 20409 043

**Inst. Sheet:** 81000 233



Model	Volts	Open Flow gpm (lpm)	Pressure On/Off	Amps @ 10 psi (0.7 bar)	Strainer Included
04406 143	12V dc	3.2 (12.1)	22/35 psi	3.9	No
IAPMO Listed			(1.5/2.4 bar)		
R4406 343	24V dc	3.3 (12.5)	22/35 psi	2.0	No
CE Model			(1.5/2.4 bar)		
04406 043	115V ac	3.3 (12.5)	22/35 psi	0.4	No
			(1.5/2.4 bar)		

### WARNING



Pumps are not to be used for pumping gasoline or flammable liquids. Explosion and death could occur.

### 4306 Series Pumps The Universal Replacement Pump

- Smooth water flow to over 3.2 gpm (12.1 lpm)
- Designed for up to 5 fixtures
- Runs dry without harm to the pump
- Easy to install, service and winterize
- Recommended for use with accumulator tank
- Includes plug in ports for easy installation:  
Two 1/2"-14 straight pipe ports  
Two 1/2" (13mm) hose barb ports
- Install a Flojet water strainer to protect pump from debris (not included, see page 9)
- IAPMO & CSA listed (12 Volt dc)

Note: See Accumulator Tanks on page 8

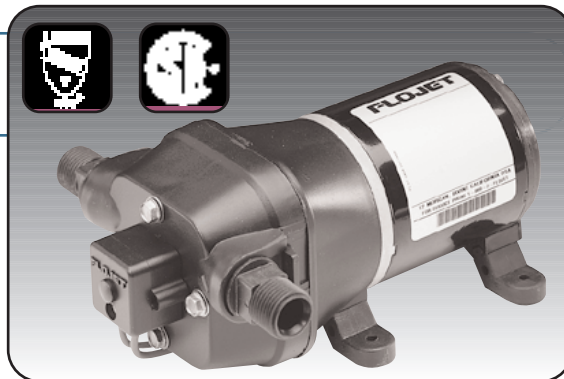
**Size:** 3.75" H x 6.3" W x 8.6" L  
(95 x 160 x 218 mm)

**Weight:** 3.9 lb. (1.8 kg.)

**Pressure:** 22 - 35 psi  
(1.5 - 2.4 bar)

**Service kit:** 20409 043

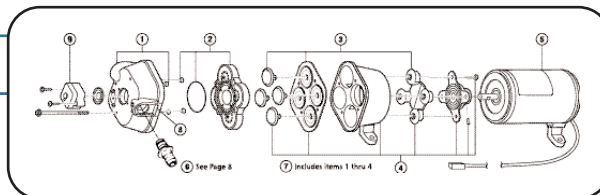
**Inst. Sheet:** 81000 232



Model	Volts dc	Open Flow gpm (lpm)	Pressure On/Off	Amps @ 10 psi (0.7 bar)	Strainer Included
04306 500	12	3.2 (12.1)	22/35 psi	4.0	No
IAPMO Listed			(1.5/2.4 bar)		
R4306 501	24	3.3 (12.5)	22/35 psi	1.8	No
CE Model			(1.5/2.4 bar)		

### QUAD II Service Parts

\* Requires new mounting feet (kit 20717 100A) when used with three-footed Quad pumps.  
† Add "R" to motor no. for CE certified model (i.e., R2009 076A).



KEY	1	2	3	4	5	7	8	9
Model	Upper Hsng	Valve Assy	Diaphragm	Lower Hsng	Motor †	Pump Head	Side Clips	Prsr Switch Kit
4306 500	20404 009	20407 030	20403 040	20419 001	2009 076A*	20406 008A	20408 000	2090 104
4306 501	20404 009	20407 030	20403 040	20419 001	2019 024A*	20406 008A	20408 000	2090 104
4406 043	20404 000	20407 030	20403 040	20419 001	2029 087A	20406 001A	20408 000	2090 104
4406 143	20404 000	20407 030	20403 040	20419 001	2009 076A*	20406 001A	20408 000	2090 104
4406 343	20404 000	20407 030	20403 040	20419 001	2019 024A*	20406 001A	20408 000	2090 104





# Water System Pumps

## Deluxe Water System 3.5 gpm (13.5 lpm)



### Premium Model

- New larger motor for more power
- Delivers over 3.5 gpm (13.5 lpm)
- Provides higher pressure to all fixtures
- Improves a low flow, low pressure system
- Model 'A' includes strainer

**Size:** 3.75" H x 6.3" W x 8.6" L  
(95 x 160 x 218 mm)

**Shp. Wt:** 4.5 lb. (2.1 kg.)

**Pressure:** 20 - 40 psi  
(1.4 - 2.8 bar)

**Service kit:** 20409 043

**Inst. Sheet:** 81000 267

Model	Volts dc	Open Flow gpm (lpm)	Pressure On/Off psi (bar)	Amps @ 10 psi (0.7 bar)	Strainer Included
4305 144A	12	3.5 (13.5)	20/40 psi 1.4/2.8 bar	5.0	Yes



### Recommended Package

- Use the Pressurized 1 Litre Accumulator Tank 30573 0001A, for a smooth steady flow.
- See page 8.

## Duplex Water System Pumps



### 2100 Series Pumps

- For use with 1, 2 or 3 fixture systems
- Fully automatic demand pumps
- Supplies 1.3 or 2.3 gpm (5 or 8.7 lpm)
- Includes fittings for easy installation  
Two 1/2" (13 mm) hose barb ports  
One 1/2" - 14 straight pipe port
- Install with FLOJET 1740-002 strainer (see page 9)

- The -12 and -919 are IAPMO listed
- The -919 model is CSA listed

**Size:** 3.75" H x 8.2" L x 3.25" W  
(95 x 208 x 83 mm)

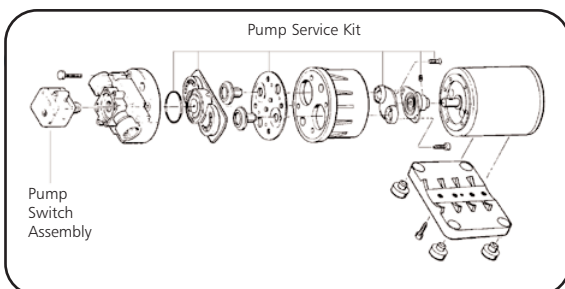
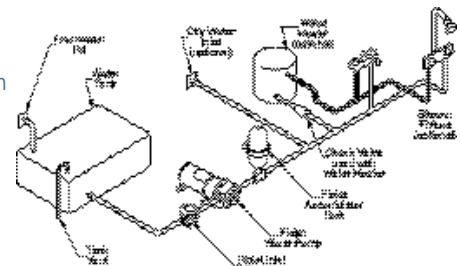
**Shp. Wt:** 4.0 lb (1.8 kg)

**Inst. Sheet:** 81000 127,  
81000 260  
(-916/-919)

Model	Volts dc	Open Flow gpm (lpm)	Pressure On/Off psi (bar)	Amps @ 10 psi (0.7 bar)	Strainer Included
2100-12	12	2.3 (8.7)	15/27 (1/1.9)	2.5	No
2100-740	24	2.3 (8.7)	15/27 (1/1.9)	1.5	No
2100-750**	12	2.3 (8.7)	15/27 (1/1.9)	2.5	No
2100-916*	12	1.4 (5.3)	8/12 (0.6/0.8)	1.9	No
2100-919 <sup>2</sup>	12	1.3 (4.9)	30/45 (2.1/3.2)	2.5	No

\*Low pressure export model \*\*Includes fuse holder and 7 Amp fuse  
<sup>2</sup>CSA Listed

### Water System Diagram



### Service Parts

Model	Motor	Pump Service Kit	Pressure Switch Assembly
2100-12	02009-004C	21046-057	02095-105
2100-740	02019-001A	21046-057	02095-105
2100-750	02009-004C	21046-121	02095-105
2100-916	02009-043A	21046-057	02095-108
2100-919	02009-008A	21046-187	02095-103



## Premium Plus 4.5 gpm (17.0 lpm) Water System Pumps

### 4325 Series Heavy Duty Water System

- For use with a 1 to 5 gallon (3 to 20 liter) accumulator tank - 4.5 gpm (17.0 lpm)
- Designed for 6 or more fixtures
- Provides quiet operation and smooth flow
- Runs dry without harm to the pump
- Includes plug-in ports for easy installation:
  - Two 1/2" (13mm) - 14 straight pipe thread ports
  - Two 3/4" (19mm) hose barb ports
  - Two 3/4" (19mm) garden hose ports
- Install with new FLOJET strainer (included) to protect pump from debris

**Size:** 3.75" H x 6.3" W x 9.9" L  
(95 x 160 x 252 mm)

**Shp. Wt:** 6.0 lb (2.8 kg)

**Pressure:** 40 psi (2.8 bar)

**Service kit:** 20409 043

**Inst. Sheet:** 81000 074



### Recommended Package

- Use the Pneumatic Bladder Accumulator Tank 18810-0000, for less cycling and smooth flow. See page 8.

Model	Volts	Open Flow gpm (lpm)	Pressure On/Off	Amps @ 10 psi (0.7 bar)	Strainer Included
4325 143	12 dc	4.5 (17)	40psi (2.8 bar)	6.0	Yes
4325 343	24 dc	4.5 (17)	40psi (2.8 bar)	2.5	Yes
4325 043	115 ac	4.5 (17)	40psi (2.8 bar)	2.0	Yes

### Jabsco Electric Pump & Faucet

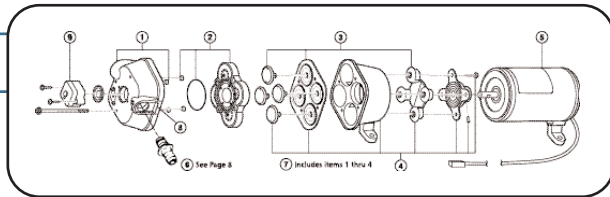
- The answer to running water at the turn of a switch
- Quiet operation electric pump is compact, easy to install, draws only 1.6 amps at 12 Volts and pumps 1 gpm at 3 psi (3.8 lpm at 0.2 bar)
- Stainless steel faucet has a swing spout, easy-to-clean white plastic base and built-in switch to operate
- Switch rating up to 5 amps at 12 Volts
- Available as individual components or pump/faucet combination package
- Pump and faucet have a 3/8" (9.5 mm) hose connection
- Centrifugal pump is not self-priming and must be mounted below water level or tank
- Pump may be screwed directly into water tank
- May be used with fresh or salt water



Model	Description	gpm (lpm)	Amps Fuse Size	Weight lb (kg)	Std Ctn
42510-0000	Pump Only	2.0 (7.6)	1.6 (3.0)	3/4 (0.3)	6
42520-0000	Faucet Only	-	-	1/4 (0.1)	6
42530-0000	Pump & Faucet	2.0 (7.6)	1.6 (3.0)	1.0 (0.5)	6

### QUAD II Service Parts

\* Requires new mounting feet (kit 20717-100A) when used with three-footed Quad pumps.  
 † Add "R" to motor no. for CE certified model (i.e., R2009-076A).



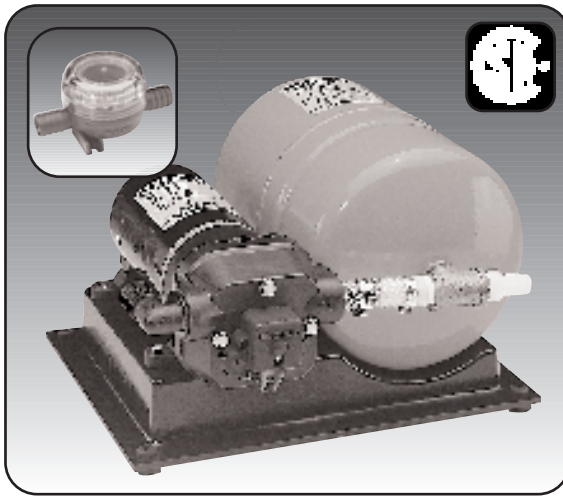
KEY Model	1 Upper Hsng	2 Valve Assy	3 Diaphragm	4 Lower Hsng	5 Motor †	7 Pump Head	8 Side Clips	9 Prsr Switch Kit
4305 144	20404 003	20407 030	20403 040	20419 002	2009 087A	20406 002A	20408 000	2090 118
4325 043	20404 003	20407 030	20403 040	20419 002	2029 091A	20406 002A	20408 000	2090 118
4325 143	20404 003	20407 030	20403 040	20419 002	2009 080A*	20406 002A	20408 000	2090 118
4325 343	20404 003	20407 030	20403 040	20419 002	2019 027A*	20406 002A	20408 000	2090 118

# Water System Pumps



# High Volume Water System Pumps

## High Volume Water System Pumps



### 2840 Series High Volume Water Pressure System

- Integrated pump and accumulator tank system
- Compact design installs easily in convenient locations
- May be mounted vertically or horizontally
- Supplies 4.5 gpm (17.0 lpm) up to 6 gpm (22.7 lpm) with fully charged tank
- Can run dry without harm
- FDA materials in pump and accumulator tank for drinking water
- Self-priming up to 10ft. (3.1m)
- Includes assorted ports for easy installation
- Accumulator tank has total volume of 1.1 gallon (4.1 liter)
- Install the FLOJET strainer (included) to protect pump from debris

Now there are 3 models to choose from to meet your requirements:

#### 2840 100

4.5 gpm (17 lpm) - 10 valves:

- This unit handles washer/dryer, ice maker, filtered water, two baths, and kitchen.

#### 2840 110

3.5 gpm (13.5 lpm) - 7 valves:

- This deluxe system can handle washer/dryer, ice maker, filtered water, one bath, and a kitchen.

#### 2840 120

3.3 gpm (12.5 lpm) - 5 valves:

- This unit is ideal for ice maker, filtered water, bath, and kitchen.

Model	Volts	Open Flow gpm (lpm)	Pressure Shut Off	Max Amps
2840 100	12V dc	4.5 (17)	40 psi (2.8 bar)	10.0
2840 110	12V dc	3.5 (13.5)	40 psi (2.8 bar)	8.0
2840 120	12V dc	3.3 (12.5)	40 psi (2.8 bar)	7.0
2840 300	24V dc	4.5 (17)	40 psi (2.8 bar)	5.0
2840 000	115V ac	4.5 (17)	40 psi (2.8 bar)	1.5

**Size:** 7.2" H x 11.3" W x 12.8" D  
(191 x 286 x 325 mm)

**Shp. Wt:** 8.8 lb (4 kg)

**Service kit:** 20409 043

**Inst. Sheet:** 81000 290

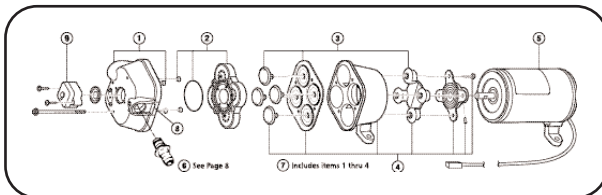
## **new** 2880 Series - Delivers over 8 gpm ( 31 lpm)

For added performance, call the factory about the new 2880 Series. These extra high powered systems feature:

- Dual 4.5 gpm (17.0 lpm) pumps to deliver over 8 gpm (31 lpm).
- System cut-off pressure is 45 psi.
- Inlet and outlet ports are 3/4" (19 mm) hose barb for reinforced poly hose.

- The 2880 is available in 12 Volts dc and 24 Volts dc models to service the RV, Bus Conversion and Commercial Coach markets.

Ask your supplier/retailer to order a 12 Volts dc 2880 100A or a 24 Volts dc 2880 300A model for that special high performance application.



### Service Parts

Service Kit	Upper Hsng Assy Kit	Check Valve Assy	Lower Housing	Accumulator Tank	Base	Port Kit (2 each)	Pump Head Assembly	Port Clips (2 each)	Pressure Switch
20409 043	20404 003	20407 030	20419 002	20799 000A	20796 000A	20381 022	20406 002A	20408 000	02090 118





## Jabsco 36950 Series Pumps

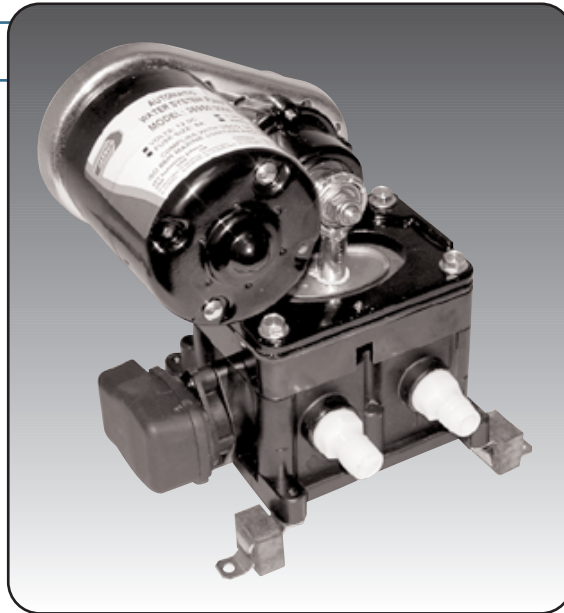
- A direct replacement pump for many early (1975 to 1980) Recreation Vehicles with two or three outlets
- See page 3 for other pumps that can be used in place of this model
- Dependable, easily repaired, and able to run dry for extended periods
- Belt drive and flexible mounts aid noise reduction
- Pump protected against city water pressure by built-in port check valve
- Pulsation dampeners absorb water hammer
- Ports fit 1/2"-5/8" (13-16mm) hose

**Size:** **36950-2000**  
8-1/2" H x 5-9/16" W x 6-9/16" L (216 x 141 x 167 mm)

**Weight:** 10 lb (4.5 kg)  
**Std Carton:** 4

**Size:** **36950-2010**  
8-1/2"H x 5-9/16"W x 6-9/16" L (216 x 141 x 167 mm)

**Weight:** 10 lb (4.5 kg)  
**Std Carton:** 1



### WARNING



Explosion Hazard.  
Pumps with AC motors can spark.  
Explosion and death can occur. Do no use where flammable vapors are present.

Model	Volts dc	Open Flow gpm (lpm)	Amps/ Fuse
36950-2000	12	3.0 (11.4)	6.0 (8)
36950-2010	24	3.0 (11.4)	3.0 (4)

NOTE: New motors may exhibit a slightly higher amp draw than nominal until broken in.

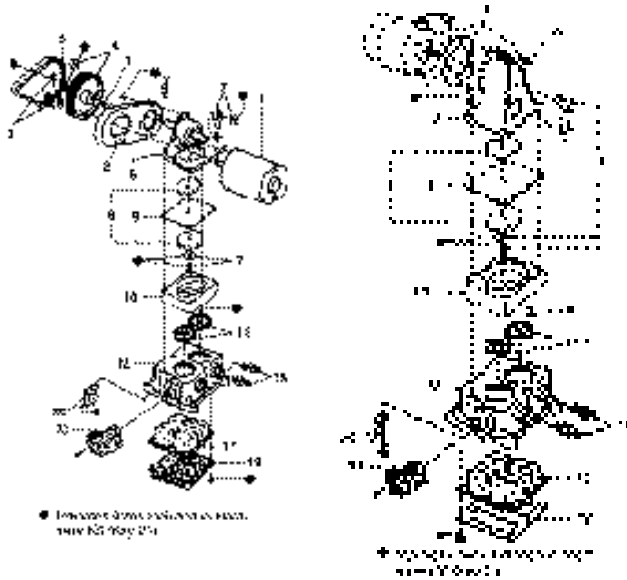
## Service Parts

Key	Description Replacement Parts	36950-1 Series	36950-2 Series
1	Motor Kit 12V dc	30200-0000	30200-0000
5	Belt	30022-0000•	30022-0000•
7	Connecting Rod	-	-
9	Diaphragm	30015-0000•	30015-0000•
11	Valve Set	30004-0000†	30004-0000†
12	Base Kit (See †)	35620-1100	44114-1100
13	Pressure Switch	37121-0010	37121-0010
		37121-0000*	37121-0000*
15	Ports Set	37176-0000†	37176-0000•
17	Pulsation Dampener	37178-0000†	44127-1000†
21	Service Kit (See •)	30126-0000	43990-0061

Key	Description Replacement Parts	36970-1 Series	36970-2 Series
1	Motor Kit 12V dc	30201-0000	30201-0000
5	Belt	-	-
7	Connecting Rod	30033-0000	30033-0000
9	Diaphragm	30015-0000•	30015-0000•
11	Valve Set	30004-0000†	30004-0000†
12	Base Kit (See †)	35620-1100	44114-1100
13	Pressure Switch	37121-0010	37121-0010
		37121-0000*	37121-0000*
15	Ports Set	37176-0000†	37176-0000•
17	Pulsation Dampener	37178-0000†	44127-1000†
21	Service Kit (See •)	30123-0000	43990-0064

36950-Series

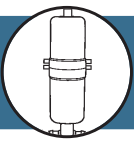
36970-Series



• Indicates items included in Hardware Kit (Key 21)

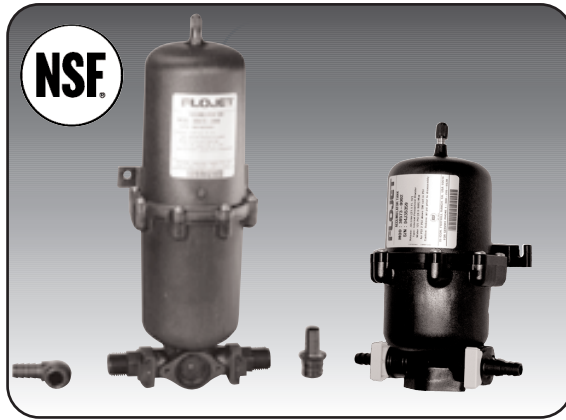
\* Includes Switch and Conversion Kit to mount new type switch onto older style -J and -0000 pumps.

# Automatic Water System Pumps



# Accumulator Tanks

Install between pump and water heater in main distribution line



## Pressurized Accumulator Tank Model 30573

- Compact pneumatic bladder tank is designed for smaller systems and spaces
- Meets RVIA regulations
- Mounts easily in any position
- Size: 5" dia x 13" high (119 x 325 mm)
- Smooths faucet and shower flow by eliminating pulsations and water hammer for an improved water system
- Weight: 5" dia x 9" high (119 x 214 mm)
- Includes both 1/2" (13 mm) hose barb and 1/2" - 14 straight thread snap-in port fittings
- Inst. Sheet: 81000 584
- Tank is pressurized to 10 psi (0.7 bar) and can be fine-tuned to cut-in pressure of pump
- 81000 397
- NSF Listed

Model	Max Working Pressure psi (bar)	Working Volume Oz/liter
30573 0001	125 (7.1)	32 (1.0 L)
30573 0004	125 (7.1)	21.5 (0.6 L)



## Jabsco Model 18810 Pneumatic Bladder Accumulator Tank

- Will smooth flow from faucets and shower, reducing pump cycling and eliminating pulsations and water hammer
- Port is 3/4" NPT (male)
- Water is totally separated from air chamber and metal tank by a bladder and polypropylene tank liner
- Pre-pressurized to 20 psi (1.4 bar)
- NSF-61 listed for all water applications
- Tank may be fine tuned to cut-in pressure of pump
- Volume of tank is 2 gallons (7.8 liters) with a working water volume of about 1 gallon (3.9 liters)
- Meets RVIA regulations
- Mounts horizontally or vertically, even upside down
- Size: 8" dia x 12-5/8" high (203 x 320 mm)
- Includes brackets and band clamps
- Weight: 5 lb (2.3 kg)

Model	Max Working Pressure psi (bar)	Working Volume gallon/liter
18810-0000	100 (6.9)	1 (3.9)



## Jabsco Model 12573 Accumulator Tank

- Economy model reduces water system pulsation and prevents rapid on/off pump cycling
- Tee fitting for 1/2" (13 mm) hose at base of tank
- No moving parts
- Molded of ABS Plastic
- Trapped air in tank must be replenished periodically
- Size: 5" dia x 13-1/8" high (127 x 330 mm)
- Removable plug in top for draining and winterizing
- Weight: 1.5 lb (0.7 kg)
- One quart capacity
- Operating pressure up to 125 psi (7.1 bar)
- Connects to main water distribution line

Model	Max Working Pressure psi (bar)	Capacity quart/liter
12573-0000	125 (7.1)	1





# Toilets & Macerator Pumps

## Portable RV Waste Pump

- Connects directly to the RV waste outlet
- Eliminates the 3' sewer hose
- Discharge through a garden hose
- Rinse water and back-wash valve
- Remote on/off switch and 6' harness
- Pump tanks empty up to 50'
- Dump tanks to any sewer access
- Easy clean-up and rugged storage case

Designed to greatly improve one of the least desirable functions of the RV experience. Cleanly handle both the black and gray water from your holding tanks with this new self-priming, powerful macerator pump. The pump housing is designed to connect on to the standard 3" sewer adapter. Power leads with plug may

be permanently attached to vehicle, or battery clips may be attached for complete portability.

*Note: Some vehicles require an angle adapter for proper fit. Use this product in accordance with EPA Sanitary Regulations.*

- Model No:** 18555 000A  
**Voltage:** 12 Volts DC Nominal  
**Amp Draw:** 16.5 Max (fuse 20A)  
**Ports:** 3/4" NGH (m) "Garden Hose"  
**Impeller:** "Jabsco Nitrile" compound  
**Chopper:** Stainless Steel  
**Weight:** 6 lb. (2.8 kg)  
**Case Size:** 12" x 13" x 5.5" (30cm x 32cm x 14cm)

\*Patent Pending



Model	Outlet	Max Flow gpm (lpm)	Volts DC	Amp
18555 000A	3/4" NGH	13 (49)	12	16

*Note: Thetford outlet requires an adapter*

## Flojet Series 18550 Macerator Pump

- RV macerator pump can empty a 30 gallon (115 liter) holding tank in 3 minutes
- RV version accepts 3" (75 mm) hose on the inlet port; Jabsco Marine equipped with 1 1/2" (38 mm) hose barb and 1 1/2" (38 mm) male pipe
- Grinds waste into small particles for easy disposal through 1" (25 mm) hose barb outlet
- Self-priming with a flow rate of 13 gpm (49 lpm)

- Pump can be permanently installed for easy holding tank evacuation into a toilet or plumbing clean out access

- Weight:** 18550 000  
18590 1000  
18590 1001  
5 lb (2.3 kg)
- 18690 1010  
19 lb (6 kg)



Model	Inlet	gpm (lpm) @ 10ft (3m)	Volts	Amps	Fuse/Breaker
18550 000	RV 3" x Hose barb	13/49	12 dc	16	20
18550 100	RV 3" x Garden hose	13/49	12 dc	16	20
18590 1000	Marine 1-1/2" (38mm)	13/49	12 dc	16	20*
18590 1001	Marine 1-1/2" (38mm)	13/49	24 dc	8	10*
18690 1010	Park 3" (75mm)	13/49	115 Ac	5	T.P.†

\*Thermally Protected Motor.

## Jabsco Model 37075 Designer Style Electric Toilets

- Jabsco designer styled electric toilets bring a new level of elegance to marine-type toilets
- Sleekly contoured toilets are available in either white or bone china
- Designed to fit snugly against a vertical wall and requires no space below floor
- Skirted vitreous china bowl conceals all plumbing and electrical wiring, for a clean, uncluttered look
- The bowl and full-size seat assembly are ergonomically

- designed for comfort
- Toilets are 15-1/2" (39.4cm) wide by 19-1/4" (48.9cm) long and are fitted with contoured, household size seat and lid assemblies
- Available in two heights: The DS-214 Series is a compact 14" (35.6cm) tall and the DS-217 Series is a full size (household height) 17" (43.2cm) tall
- All options include a powerful waste water evacuation pump with built-in macerator

**Shp. Wt:** 57 lb (25.8 kg).



Model	Type	Colour	Volts dc	Amps	Fuse/Breaker
37075-0092	DS 214	White	12	10	25
37075-0094	DS 214	White	24	5	15
37075-1092	DS 217	White	12	10	25
37075-3092	DS 217	Bone	12	10	25
37075-1094	DS 217	White	24	5	15
37075-3094	DS 217	Bone	24	5	15

*All models equipped with Solenoid valve to control rinse water.*



37075-Series Solenoid Valve & Siphon Breaker



DS-214 & DS-217 Toilets Multi-function Flush Control Panel



# Accessories

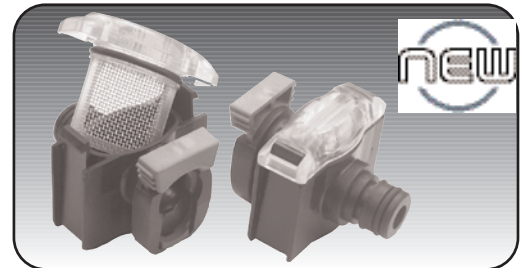


## Model 1740 Series Inlet Strainers

- Keeps debris and particles from entering any water pump
- Plug-in Quad Port 90° strainer allows for easy installation and compatibility with Flojet pumps
- Threaded bowl makes cleaning quick and easy
- Stainless Steel 40 mesh screen is recommended for fresh water applications.



**NEW** quick connect strainer for universal applications with Flojet pumps

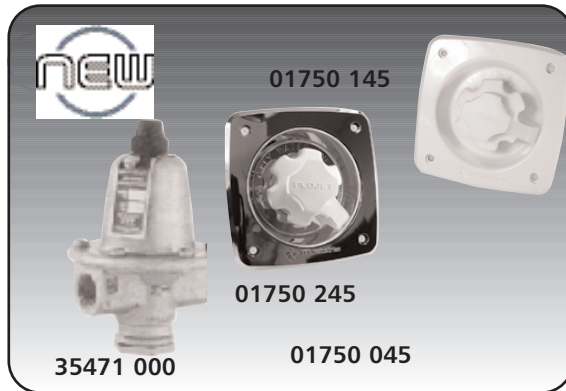


1740 900

1740 300

Part No	Inlet	Outlet	Screen
1740 000	3/4" (19mm) Barb	3/4" (19mm) Barb	40 Mesh
1740 002	1/2" (13mm) Barb	1/2" (13mm) Barb	40 Mesh
1740 004	1/2" - 14 Pipe	1/2" - 14 Pipe	40 Mesh
1740 300	Quick Connect	Quad Connect	40 Mesh
1740 375	3/8" NPT (f)	3/8" NPT (f)	40 Mesh
1740 900	Quick Connect	Quad Port 90°	40 Mesh

Part No	Inlet	Outlet	Screen
1740 010	3/4" (19mm) Barb	Quad Port 90°	40 Mesh
1740 012	1/2" (13mm) Barb	Quad Port 90°	40 Mesh
1740 014	1/2" - 14 Pipe	Quad Port 90°	40 Mesh
1740 375	3/8" NPT(f)	3/8" NPT(f)	40 Mesh
1740 900	Quick Connect	Quad Port 90°	40 Mesh



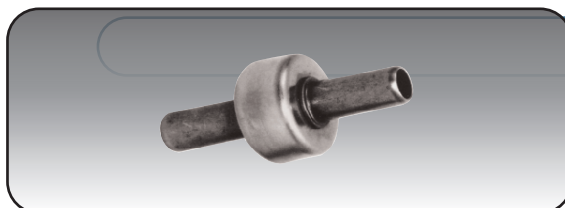
## Water Pressure Regulators

- Protect your RV appliances and pump from damaging pressures of unregulated water hookups
  - Reduce high water pressures up to 150 psi (10 bar) down to 45 psi (3.1 bar)
  - Built-in backflow preventer
  - Easy to install
  - Easy-clean in-line filter
  - CSA (IAPMO TS 28), NSF-18
  - Two models: a permanently installed flush mount model and an in-line model with brass garden hose fittings that connect water entry and garden hose water hookup
- Weight:** **1750 (Flush)** 6 oz (0.2 kg)  
**1750 (In-line)** 3 oz (0.1 kg)  
**35471 - 1.5 lb (0.7 kg)**

Part No	Inlet	Outlet	Type
01751 145	3/4" GHT	Quick Connect	Flush
01751 245	3/4" GHT	Quick Connect	Flush

Part No	Inlet	Outlet	Type
01750 045	3/4" GHT	3/4" GHT	In-line
01750 145	3/4" GHT	1/2" - 14 Pipe	Flush
01750 245	3/4" GHT	1/2" - 14 Pipe	Flush
35471 0000*	1/2" NPT	1/2" NPT	In-line

\*The Model 35471-0000 is set to a pressure of 40 psi.



## Jabsco High Pressure Check Valve

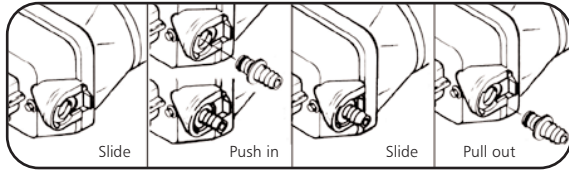
- When located at the pump outlet, this high pressure check valve protects your pump from the damaging high pressure of unregulated city water connections
  - Can be located at the water heater inlet to prevent backflow of hot water into the cold water system and pump
  - Ports are sized for 1/2" (13 mm) slip-on hose
- Size:** 1-1/2" x 4" (40 x 100mm)  
**Weight:** 1.4 lb (0.1 kg)  
**Model:** 34344-000

Also see 01883 000 P. 26





## 'Quick-Connect' Port System



Snap-in seal tight ports

Quick-Connect Quad port system makes hose removal easy and allows for fast winterizing and system draining. All Quad ports fit directly into pump and are compatible with new Quad II pumps.

■ Two ports are included in each Quick-Connect package.

### Installation:

1. Move slide back.
2. Push port all the way in.
3. Move slide forward to lock.

### Removal:

1. Move slide back.
2. Pull port out of pump body.

Part Number	Port	Size	Type	O-Ring Metal	Use
20381 000	Quad	1/2" (13mm) - 14 Pipe	Straight	EPDM	Potable
20381 034	Quad	1/2" (13mm) - 14 Pipe	Straight	Viton	Chemicals
20381 026	Quad	10/13 mm Hose Barb	Straight	EPDM	Potable
20381 002	Quad	1/2" (13mm) Hose Barb	Straight	EPDM	Potable
20381 015	Quad	1/2" (13mm) Hose Barb	Straight	Viton	Chemicals
20381 016	Quad	1/2" (13mm) Hose Barb	Straight	Buna	Oil Resistant
20381 003	Quad	5/8" (16mm) Hose Barb	Straight	EPDM	Potable
20381 020	Quad	5/8" (16mm) Hose Barb	Straight	Buna	Oil Resistant
20381 033	Quad	5/8" (16mm) Hose Barb	Straight	Viton	Chemicals
20381 006	Quad	3/4" (19mm) Hose Barb	Straight	EPDM	Potable
20381 012	Quad	3/4" (19mm) Hose Barb	Straight	Buna	Oil Resistant
20381 014	Quad	3/4" (19mm) Hose Barb	Straight	Viton	Chemicals
20381 007	Quad	Garden Hose Adapter		EPDM	Potable
20381 013	Quad	Garden Hose Adapter		Buna	Oil Resistant
20381 032	Quad	Garden Hose Adapter		Viton	Chemicals
20381 008	Quad	1/2" (13mm) - 14 Pipe	90° Elbow	EPDM	Potable
20381 036	Quad	1/2" (13mm) - 14 Pipe	90° Elbow	Viton	Chemicals
20381 024	Quad	10/13 mm Hose Barb	90° Elbow	EPDM	Potable
20381 009	Quad	1/2" (13mm) Hose Barb	90° Elbow	EPDM	Potable
20381 017	Quad	1/2" (13mm) Hose Barb	90° Elbow	Viton	Chemicals
20381 019	Quad	1/2" (13mm) Hose Barb	90° Elbow	Buna	Oil Resistant
20381 010	Quad	3/4" (19mm) Hose Barb	90° Elbow	EPDM	Potable
20381 018	Quad	3/4" (19mm) Hose Barb	90° Elbow	Viton	Chemicals
20381 031	Quad	3/4" (19mm) Hose Barb	90° Elbow	Buna	Oil Resistant

Note: 10/13mm ports are stepped to be used with 10mm or 13mm hose and may also be used with 3/8" I.D. hose. 5/8" hose barb, 90° elbow is not available. 1/2" - 14 pipe is similar to 1/2" BST.

# Quad Port Fittings



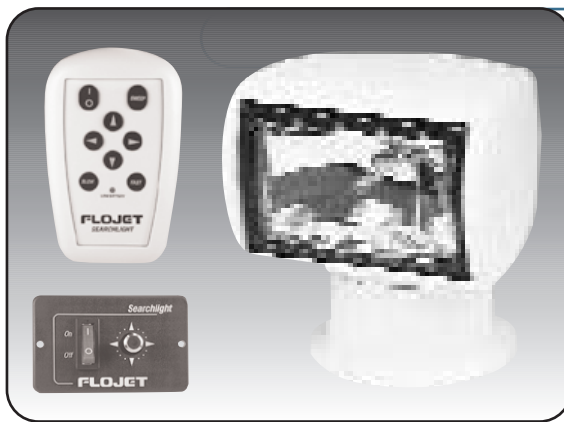
# Remote Control Searchlights



## Wireless Searchlight Model 8055

- Complete with wireless remote control.
  - Full 320° horizontal rotation, 75° vertical sweep.
  - 1 lux at 885 ft (268 m).
  - Easily replaceable 5" (130mm) halogen sealed beam delivers 100,000 candlepower.
  - Complete with remote transmitter for 4-way movement, Fast/Slow and Low Battery indicator.
  - Tough thermoplastic housing and base.
- Size:** 6-1/2" W x 8" L x 8" H (16 x 20 x 20 cm).  
**Weight:** 5 lb (2.3 kg)  
**08055 100** White

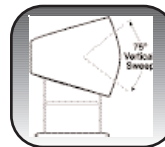
Model	Volts	Watts	Amps	Candle Power	Bulb Number
08055 100	12	50	5	100,000	18753-0528



## Searchlights Model 8035/8135

- Sleek design will enhance the appearance of any RV
  - Great investment in safety, and makes finding markers and spaces much easier
  - Tough weather and corrosion resistant white thermoplastic construction
  - Sealed-beam halogen bulb produces dusk-to-dawn piercing light
  - Integrally molded clutch design allows the light to be operated against limit stops, without damage
  - 8035 complete with remote transmitter for 4-way movement, Fast/Slow and Low Battery indicator.
- Size:** 7" W x 8-1/8" L x 7-3/4" H (18 x 18 x 21 cm)  
**Weight:** 6.0 lb (2.7 kg)  
**08035 100** Wireless  
**08135 100** Cable Controlled w/joystick and lighted switch

Model	Volts	Watts	Amps	Candle Power	Bulb Number
08035 100	12	50	5	100,000	18753-0178
08135 100	12	50	5	100,000	18753-0178



Unique bulb only 75° vertical sweep housing maintains sleek horizontal position.



## Wireless Searchlight Model 8046

- The 8046 gives you more usable light on-target
  - Sealed-beam halogen bulb, with a 15 Lux value and 175,000 candlepower, produces the dusk-to-dawn piercing light that enables campers to expand their recreational day
  - Full 360° rotation and 60° vertical sweep
  - Complete with remote transmitter for 4-way movement, Fast/Slow and Low Battery indicator.
  - New generation of larger searchlights feature sleek styling and rugged construction
  - Searchlight housing is a modern tough weather and corrosion resistant thermoplastic
- Size:** 8-1/2" W x 10-1/8" L x 8-3/4" H (22 x 26 x 26 cm).  
**Weight:** 9 lb (4 kg)

Model	Volts	Watts	Amps	Candle Power	Bulb Number
08046 100	12	50	5	175,000	18753-0455

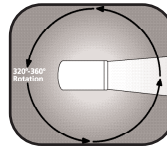




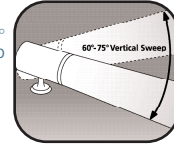
We quote performance of our searchlight range in two ways; CANDLEPOWER is the total output over the entire beam spread.

LUX is the brightness at a point within the beam spread.

From the definitions, it is clear that the most important feature in choosing a searchlight, remembering your RV size, is the Lux value. Therefore, searchlights with the highest Lux value put more usable light on the target.



60°-75° Vertical Sweep  
320°-360° Rotation

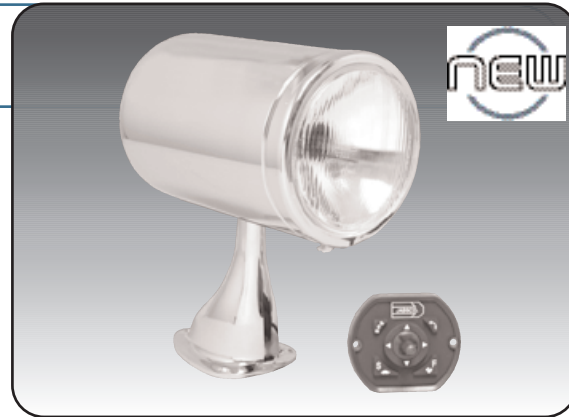


## RV Broad Beam™ Searchlight Model 63042

**Brilliant Remote Control Searchlight with cable connected Joystick control. Highly efficient HID (High Intensity Discharge) light source. Ultimate searchlight with special lens broadens spot beam for the most useful broad spot coverage.**

- Very bright long reaching HID beam
- Full 360° horizontal rotation, 70° vertical sweep.
- Joystick with optional touch-pad.
- Automatic sweep search feature.
- Two-speed movement - Fast for searching & Slow for lighting target.

- Emergency automatic "SOS" feature over 360° sweep.
  - Complete with 15 ft (4.5m) cable.
  - Durable Chrome over Brass housing and base.
  - Optional secondary control for dual station convenience.
- Size:** 11" L x 6" W x 13" H (28 x 15 x 33cm).
- Weight:** 11 lb (5 kg)
- 63042 0062** 12 Volt dc Broad-Beam HID searchlight, fuse 15A
- 64046 0007** Replacement HID bulb 12 Volt dc, 600,000cp
- 64044 0000** Secondary Control with 15ft (4.5m) cable.



Model	Volts	Watts	Amps	Candle Power	Bulb Number
63042 0062	12	50	15	600,000	64046 0007

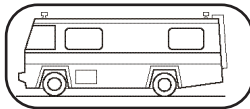
## 5" (130) RC Searchlight Model 62026

- Solid brass construction with polished chrome finish
- Designed for handling severe weather conditions
- Light features completely motorized drive unit enclosed in light housing
- Exclusive "Clutch-A-Matic" feature protects drive unit against overload, allowing light to operate for extended periods of time without harm
- Includes a separate 8 ft (2.5m) wiring cable with plug connectors on each end

- Light is equipped with a fingertip control lever for 360° horizontal sweep and 65° vertical motion
  - Dual switch for precise beam control in conjunction with on/off switch for spot or flood beam
  - Light head can be moved manually without damage
  - 9 Lux at 330ft (100m)
- Size:** 7" L x 5" W x 9-1/2" H (18 x 13 x 24 cm).
- Weight:** 7-1/2 lb (3.4 kg).



Model	Volts	Watts	Amps	Spot/Flood	Sealed Beam Number
62026-4002	12	100	10	100,000/	67296-0000
62022-4002 (Short base)				50,000 cp	



Remote control light can be fitted anywhere, front or rear.

## Wiring Cable Accessories

- Extension harnesses enable remote controls to be fitted further from the light than standard cables allow, and are needed to install secondary remote control kits.
- For 135 SL, 146SL, 155SL (12 Volts dc), 5" chrome models.



Model	Harness Size
43990-0013	10 ft (3m)
43990-0014	15 ft (4.5m)
43990-0015	25 ft (7.6m)
43990-0016	35 ft (10.7m)

# Remote Control Searchlights



# Work, Flood & Patio Lights



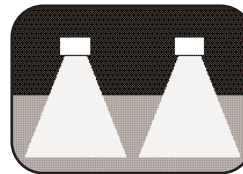
## Flush Mount Floodlight Model 45960

- Flush mount floodlights for side area lighting or safe backup lighting
- Expand your outside hours with the convenience of flood lights
- Two beam patterns to choose from: Flood Bulb or Trapezoidal Bulb patterns
- Flood bulbs recommended for backup mounting
- Trapezoidal bulbs are right for patio side mount

**Size:** 8-7/8" L x 6-9/16" H x 3-3/16" D  
(22.5 x 17 x 8cm)  
**Weight:** 3.3 lb (1.5 kg)

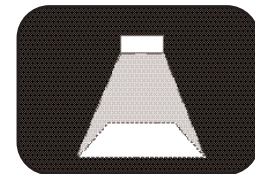
Model	Volts	Watts	Amps	Sealed Beam Number
45960-0000 Trap	12	50	3.8	18753-0352
45960-0001 Flood	12	50	3.8	18753-0351

FLOOD BULB  
Model 45960-0001



Rear Mounted

TRAPEZOIDAL BULB  
Model 45960-0000



Side Mounted



## Tungsten Halogen Floodlight Model 45900

- High power, long-life floodlights
- With 9,900 bulb candlepower and 450 hour average life, our tungsten halogen bulbs deliver 50% more light and 50% more life than ordinary incandescent bulbs
- Isolated sealed beam design, high impact polypropylene white housing, and stainless hardware
- Built to stand up to severe outdoor environment; have passed rigorous tests including salt spray, water immersion, 1,200 psi high pressure spray, and 5 g shock testing, all with zero damage
- Has earned a reputation as being one of the most reliable heavy duty lighting products made
- Mounting bracket included is designed for easy fitting in a variety of installations

**Size:** 5" L x 3" W  
(12.7 x 7.7cm)  
**Weight:** 1 lb (0.5 kg)

Model	Volts	Watts	Amps	Candle Power	Bulb Number
45900-1000	12	50	4	9,900	45903-0002



*The Jabsco Halogen Floodlight is packaged in a colorful retail display box, with features and specifications clearly visible to the customer.*





## Engine Oil Change System

- Gives you quick, easy and clean oil changes at the flip of a switch.
- Removes oil and sludge through the dipstick tube, making engine oil changes quick and easy without getting under the engine.
- Supplied with 8' of 1/4" (6.5mm) oil and heat resistant suction tube.
- Capped pouring spout is provided for emptying the tank.
- Available in 12 Volt dc with 7' (2.1m) cord with alligator clips.

**Size:** 19-1/2" H x 12" W x 8L  
**Probe:** 1/4" (6.5mm) OD x 8' (240cm) L  
**Weight:** 3.5 lb (1.6 kg)



Model	Volts dc	Amps	Maximum Capacity
01785 000A	12	4	14 Qt.

### Four simple steps for fast, clean oil changes



- 1** Start engine and run for 5 minutes to heat the oil
- 2** Remove the dipstick and insert the suction probe
- 3** Attach the power cord clips to the engine battery  
**Red = positive**  
**Black = negative**
- 4** Activate pump with switch on motor to drain crankcase

## Compact Magnetic Drive Centrifugal Sealless Heater Pump

- Delivers 3.9 gpm (15 lpm) at 4 ft (1.2 m) of head, and is designed primarily as a hot water circulation pump for RV and bus heating systems
- When plumbed to engine cooling system it will pump heated coolant water to remote radiator to warm living spaces while underway
- All plastic pump head is compatible with engine anti-freeze and capable of handling fluid temperatures up to 212° F (100° C)
- 3/4" (19mm) barbed ports
- Ignition protected motor rated for continuous duty up to maximum brush life of 2,500 hours

**Size:** 4" L x 5" W x 5" H  
**Shp. Wt:** 0.6 Lb (0.26 kg)  
**Std Carton:** 1



Model	Volts dc	Amps	Fuse/ Breaker
59510-0012	12	1.2	2
59510-0024	24	0.7	1



# Water Products



Bottled Water Dispensing System

## Bottled Water Dispenser

### Applications

- Designed for dispensing bottled water to refrigerators, ice machines and dispensing faucets, coffee machines, beverage dispensers, vending machines and carts
- For fresh bottled water when travelling or at home
- Available in 12 Volts dc and 115 Volts ac

- Built-in check valve to prevent back flow
- Universal seal cap and adjustable dip tube will accommodate most bottle sizes 2.5 to 5 gallons (9.4 to 30 liters)
- 0.75" (6 mm) ID x 20' (6.1 m) discharge hose included
- UL and CUL listed

### Special Features

- Positive displacement, double diaphragm pump design
- Compact size for easy mounting
- Float switch for automatic shut-off, when bottle is empty

**Size:** 3" H x 5-1/2" W x 7-1/2" D (76 x 140 x 190 mm)

**Weight:** 5.6 net lbs. (2.5 kg)

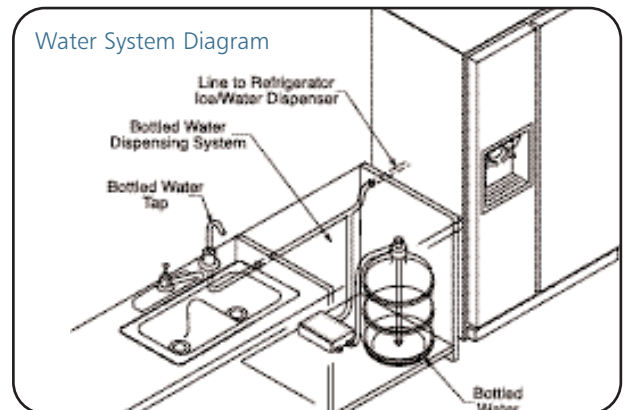
**Shp. Wt:** 8.5 net lbs. (3.9 kg)

Model	Volts	Flow gpm (lpm)	Pressure psi (bar)	Amps	Cord
BW3000A	12dc	1.0 (3.8)†	40 (2.8)	3.0	12" (30cm) lead wires
BW1000A	115ac	1.0 (3.8)†	40 (2.8)	0.5	6' (1.8 m) cord & plug

† Discharge Hose: 1/4" (6.5mm) x 20' (6.1 m)



### Water System Diagram





# Danforth™ Compasses

## Danforth™ Quest™ Compasses

- Whether your fun takes you on the water, over the highway, or off-road, the new Danforth® Quest™ compass will point the way
- Unique bracket design provides versatility to mount compass at any angle on horizontal, vertical and overhead surfaces
- Mounts with adhesive mounting disk, with use of screws optional
- Exclusive NO-SPIN card technology provides guaranteed accuracy and rock-steady readings
- Compact sporty size (about the size of a tennis ball)
- Hi-flux corrector magnets provide the added measure of adjustment required for automobile, RV, ATV, snowmobile, and certain marine installations
- 12 Volts dc red night illumination is standard



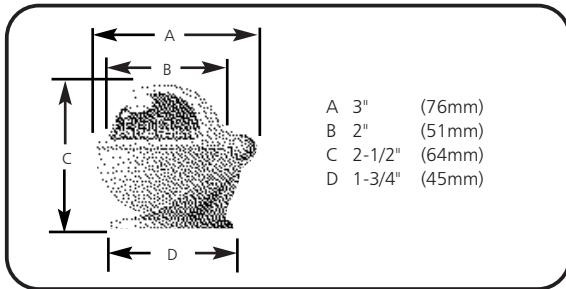
Model C100 (Black)

Model C101 (White)



Model C102 (Gray)

Model C103 (Yellow)



Model	Description	Apparent Card Size (inches/mm)	Card Degrees	Finish
C100	Front Read, Black Card	2" (51mm)	5°	Black
C101	Front Read, Blue Card	2" (51mm)	5°	White
C102	Front Read, Blue Card	2" (51mm)	5°	Gray
C103	Front Read, Black Card	2" (51mm)	5°	Yellow



*The Danforth Quest Compasses are packaged in a colorful retail display box, with features and specifications clearly visible to the customer.*





# Sudbury® Sealants

## Marine Sealant Characteristic and Selection Guide

Elastomeric Characteristics	Elastomeric Sealants	Silicone Sealants	Polyurethane Sealants	Polysulfide Sealants
Fast Skinning	x	x		
Fast Curing	x	x		
Above or Below Waterline Use	x		x	x
Useable on All Plastics	x	x		
Paintable	x		x	x
Sandable	x		x	x
3 Year Shelf Life x	x			
Excellent Adhesion to Metal, Wood, Fiberglass, Plastic	x		x	
Easily Removed x	x		x	
Available in Clear, White and Black	x	x		



### Elastomeric Marine Grade Weather Resistant Sealant

- A one part, fast skinning (10 minutes) and fast curing (24 hours) multi-purpose marine grade sealant with superior strength, adhesion, elongation and life characteristics
- Cures in temperatures of -20° F to 120° F (-29° C to 49° C) and can be sanded and painted after curing
- Flexibility and compression capabilities are excellent
- Heavy duty use above or below the waterline
- Twists, bends, expands, and compresses
- Seals vents, beds hardware, and stops leaks
- Resistant to cleaners, oil, diesel fuel and salt water
- Adheres tenaciously without primers to fiberglass, glass, all plastic including Lexan®, ABS® and Starboard®
- Simple clean up with mineral spirits
- Not recommended for wood seams or use in areas subject to gasoline
- Available in white and clear 3 oz. (89 ml) tubes

Model	Colour	Size	Container
320	White	3 fl. oz. (89 ml)	Tube
321	Clear	3 fl. oz. (89 ml)	Tube



### Liquid Elastomeric Penetrating Sealant

- Liquid version of Elastomeric Clear Sealant
- Low viscosity sealant specially formulated for narrow joints where ordinary sealant cannot reach
- Ideal for sealing windshields, hardware, hatches, vents, and fine cabin seams
- Same skinning, curing, adhesive, and performance characteristics as Elastomeric Sealant
- Available in clear 3 oz. (89 ml) tubes

Model	Colour	Size	Container
350	Clear	3 fl. oz. (89 ml)	Tube



## Sudbury® Waxes and Restorer

Most popular marine products now available in the RV marketplace.

### One Step Fiberglass Restorer and Wax

- One-Step Fiberglass Restorer & Wax is a heavy duty cleaner and wax that works better than many rubbing compounds without the grueling effort or damaging effects of highly abrasive rubbing compounds
- Cleans deeply and restores color and depth to dry or oxidized fiberglass or painted surfaces

Model	Size	Type
413	16 fl. oz. (473 ml)	Liquid

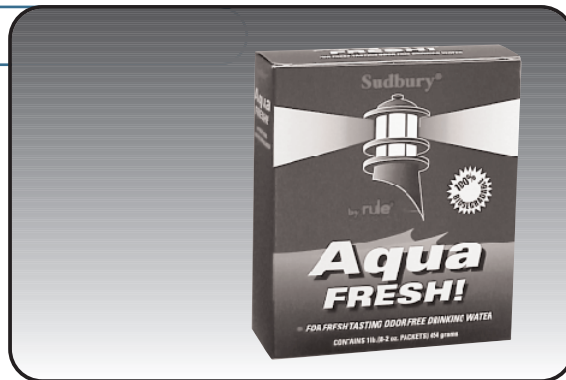


## Sudbury® Boat/RV Care Products

### Aqua Fresh!™

- For fresh tasting, odor free drinking water from fiberglass, plastic or metal tanks. Simply deposit the contents of these handy packets into water tank
- Absolutely safe and non toxic
- 100% biodegradable earth-friendly formula

Model	Size	Quantity per box
830	2 oz. (0.06 kg)	8 packets



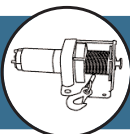
### Boat Soap™

- All-purpose, non-caustic cleaner that works well in hot or cold water
- Double-action emulsification removes scum, smudges, oil, and grease
- Great for washing greasy pots, pans, stoves, sinks and dishes
- Leaves surface film free and sparkling clean
- 100% biodegradable earth-friendly formula

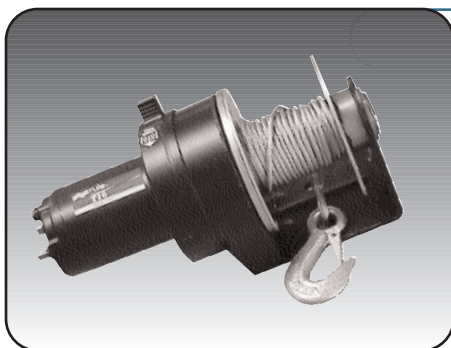
Model	Size
805-Q	32 fl. oz (946 ml)



# Sudbury® Boat/RV Care Products



# Rule® Electric Winches and Accessories



Typical Model  
1400, 1600, 2000, V20, V33



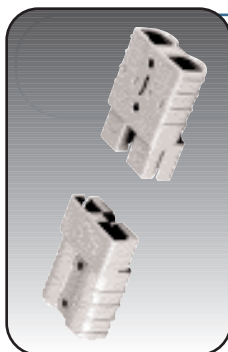
Typical Model  
V3300, V4200, V5000,  
V6000, V8400, V42

## Electric Winch Model Series

- The Rule Electric Winch product line comprises a broad range of high quality and reliable winches
- Unique features include 3-stage planetary gears for greater pulling speed, power-in, power-out for consistent load control; corrosion resistant die cast drums and lifetime lubrication.
- Each winch is shipped with the cable assembly including hook and controls
- All electric hardware necessary for battery hook-up and mounting hardware included
- 'R' in model number denotes Remote Control feature

Model	Volts (dc)	Remote Control	Free Wheel	Cable	Weight (lb/kg)
<b>1400 Series - 1400 lbs (635 kg) capacity</b>					
V14	12		●	5/32" x 50' (4mm x 15.2m)	20 (9.1)
<b>1600 Series - 1600 lbs (726 kg) capacity</b>					
V16	24		●	5/32" x 50' (4.0mm x 15.2m)	20 (9.1)
<b>2000 Series - 2000 lbs (907 kg) capacity</b>					
V20	12		●	3/16" x 50' (4.8mm x 15.2m)	22 (10.0)
V20R	12	●	●	3/16" x 50' (4.8mm x 15.2m)	25 (11.3)
V20R-24V	24	●	●	7/32" x 50' (5.6mm x 15.2m)	28 (12.7)
<b>3300 Series - 3300 lbs (1497 kg) capacity</b>					
V33	12		●	7/32" x 50' (5.6mm x 15.2m)	29 (13.2)
V33R	12	●	●	7/32" x 50' (5.6mm x 15.2m)	34 (15.4)
<b>4200 Series - 4200 lbs (1905 kg) capacity</b>					
V42	12		●	7/32" x 50' (5.6mm x 15.2m)	30 (13.6)
V42R	12	●	●	7/32" x 50' (5.6mm x 15.2m)	35 (16.0)
<b>Replacement Cable</b>					
W104	-	-	-	5/32" x 50' (4mm x 15.2m)	8 (3.6)
W107	-	-	-	3/16" x 50' (4.8mm x 15.2m)	8 (3.6)
W114	-	-	-	3/32" x 50' (2.4mm x 15.2m)	9 (4.1)

## Winch Accessories



### Cable Disconnect Kits

- Heavy duty plastic with silver coated connectors allows user to connect or disconnect both battery cables
- For Rule 1400, 1600, 2000, 3300, and 4200 series

Model	Gauge cable
W118PK	6, 8, 10, 12



### Roller Fairlead Kits

- Reduces cable wear when winching at severe angles

Model	Drum Winches
W139	For standard

Model	Drum Winches
W197	For standard



### Pulley Block

- W-131C Pulley Block
- Multiplies pulling power by 85%





# PEXtite® Plumbing System

The PEXtite® quick connect plumbing system is a product line of 1/2" and 3/8" fittings, tubing, valves, manifolds and accessories for both boat and RV water systems. Flojet has supplied the Marine and RV markets with quality products for over 25 years. The PEXtite® plumbing system is designed to complement the operation of the water system pumps from Flojet, Jabsco and others.

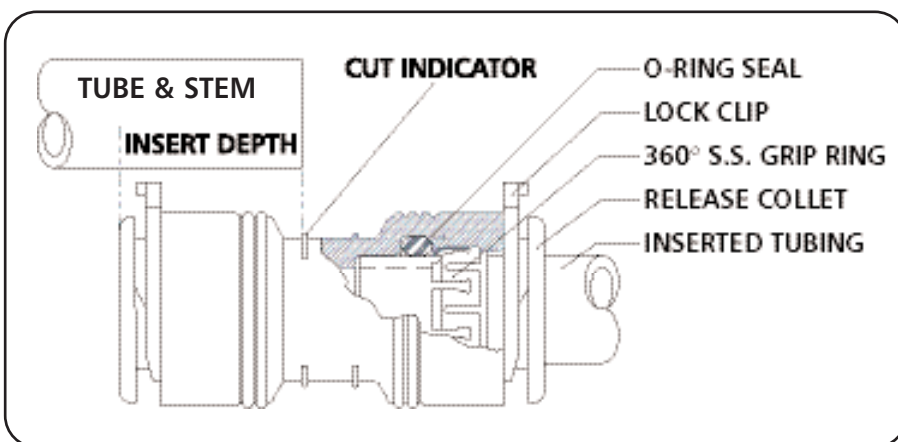
## Technical Specifications

The PEXtite® fitting is a unique combination of superior materials to meet the rigorous demands of the marine and recreation vehicle markets. Vibration and temperature swings must be a prime consideration when developing products for these markets. Salt water exposure and ambient temperatures from minus 20° F to plus 180° F are common experiences. Either pounding & choppy water at sea or backcountry roads, the system must maintain a seal for the integrity of the system.

The PEXtite® fitting materials were selected to ensure maximum strength and integrity. The body material is Polysulfone, PSU with properties that best match the requirements of the market. The 360° Grip-ring is marine grade 316 Stainless Steel. The seals are specially selected FDA approved EPDM rubber to complement the duty cycle and life requirements of a marine/RV water system. Use USA inch size, certified PEXtite® or CSA listed, PEX tubing, for hot and cold fresh or salt water systems.

Fitting	Operating Pressure	Operating Temperature	Burst Pressure
PEXtite® Fittings	20" Hg - 195 psi (13.4 bar)	-40°F (-40°C) to 200°F (93°C)	620 psi (Min)(42.7 bar)
Life Test Specification 3/8" ID = 250 psi (17.2 bar) @ 180°F (82°C) and 1/2" = 195 psi (13.4 bar) @ 180°F (82°C), for 1000 hours for both fitting and tubing			

## Installation



The PEXtite® system is designed for easiest possible installation. Only tool needed is a PEX tubing cutter.

### Simplest 2-step connection!

1. Cut tubing to length  
- For exact length, see raised cut indicator on each fitting
2. Push fitting on tubing  
- Fitting is permanently attached, may only be removed if lock clip is released and collet is depressed.

PEXtite® - Design & Installation



PEXtite® - Tees & Elbows



1812 000

Tees

Tube size	Description	Part #	Pkg	Ctn	Bulk
3/8" I.D.	3/8" I.D. Equal PEX Tee	1812 000	1	10	24
1/2" I.D.	1/2" I.D. Equal PEX Tee	1822 000	1	10	24
1/2" & 3/8"	1/2" x 1/2" x 3/8" PEX Branch Tee	1822 007	1	10	24
1/2" I.D.	1/2" PEX x 1/2" Slip-stem x 1/2" PEX Manifold Tee	1822 008	1	10	24

Package Options - Add suffix to part number: A – Display, retail package (i.e. 1812 000A)  
 B – Bulk, OEM package of 24 (i.e. 1812 000B) C – Commercial, plastic bag (i.e. 1812 000C)



1822 000



1822 007



1822 008

Elbows

Tube size	Description	Part #	Pkg	Ctn	Bulk
3/8" I.D.	3/8" I.D. Equal PEX Elbow	1811 000	1	10	24
3/8" I.D.	3/8" I.D. PEX x 1/2"-14 (f) pipe Elbow	1811 002	1	10	24
3/8" I.D.	3/8" I.D. PEX x 1/2" NPT (m) Elbow	1811 003	1	10	24
1/2" I.D.	1/2" I.D. Equal PEX Elbow	1821 000	1	10	24
1/2" I.D.	1/2" I.D. PEX x Pump Plug-in Port Elbow	1821 001	2	10	24
1/2" I.D.	1/2" I.D. PEX x 1/2"-14 (f) pipe Elbow	1821 002	1	10	24
1/2" I.D.	1/2" I.D. PEX x 1/2" NPT (m) Elbow	1821 003	1	10	24
1/2" I.D.	1/2" I.D. x 1/2" NPT (f) Drop-ear	1821 004	1	10	24
1/2" I.D.	1/2" I.D. PEX x 1/2" slip stem	1821 008	1	10	24



1821 008

Package Options -  
 Add suffix to part number:  
 A – Display, retail package (i.e. 1812 000A)  
 B – Bulk, OEM package of 24 (i.e. 1812 000B)  
 C – Commercial, plastic bag (i.e. 1812 000C)



1811 000



1811 002



1811 003



1821 000



1821 001



1821 002



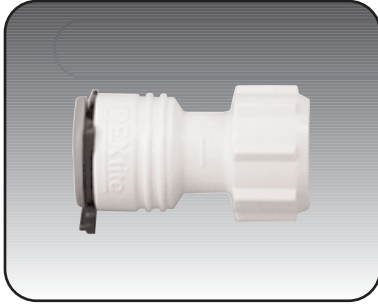
1821 003



1821 004



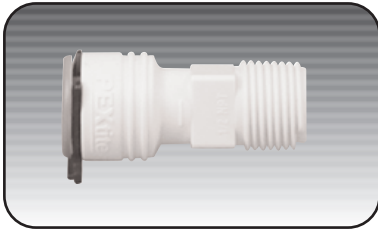
## Adapter Fittings



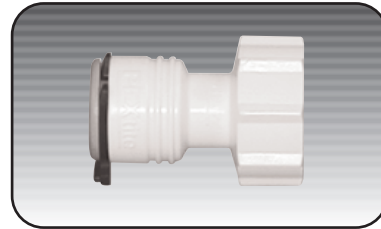
1810 002

Package Options - Add suffix to part number:  
 A - Display, retail package (i.e. 1812 000A)  
 B - Bulk, OEM package of 24 (i.e. 1812 000B)  
 C - Commercial, plastic bag (i.e. 1812 000C)

Tube size	Description	Part #	Pkg	Ctn	Bulk
3/8" I.D.	3/8" I.D. PEX x 1/2"-14 (f) pipe	1810 002	1	10	24
3/8" I.D.	3/8" I.D. PEX x 1/2" NPT (m)	1810 003	1	10	24
3/8" I.D.	3/8" I.D. PEX x 3/4" Female GH	1810 005	1	10	24
3/8" I.D.	3/8" I.D. PEX x End-stop Cap	1810 006	1	10	24
1/2" I.D.	1/2" I.D. Equal PEX Coupler	1820 000	1	10	24
1/2" I.D.	1/2" I.D. PEX x Pump Plug-in Port	1820 001	2	10	24
1/2" I.D.	1/2" I.D. PEX x 1/2"-14 (f) pipe	1820 002	1	10	24
1/2" I.D.	1/2" I.D. PEX x 1/2" NPT (m)	1820 003	1	10	24
1/2" I.D.	1/2" I.D. PEX x 1/2" NPT (f)	1820 004	1	10	24
1/2" I.D.	1/2" I.D. PEX x 3/4" Female GH	1820 005	1	10	24
1/2" I.D.	1/2" I.D. PEX x End-stop Cap	1820 006	1	10	24
1/2" I.D.	1/2" I.D. PEX x 3/8" I.D. PEX Coupler	1820 007	1	10	24
-	3/4" GH Threaded Plug w/Tether	91010 256A	1	10	24



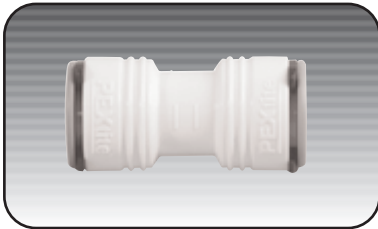
1810 003



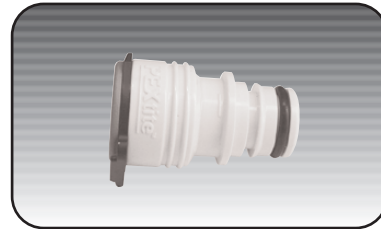
1810 005



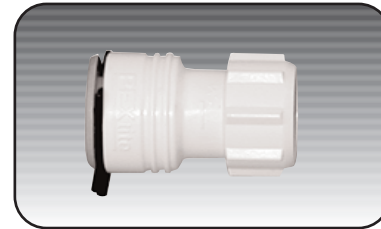
1810 006



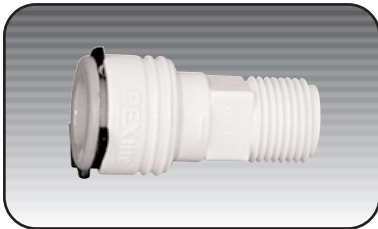
1820 000



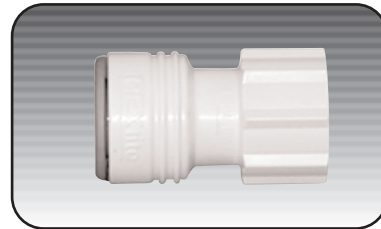
1820 001



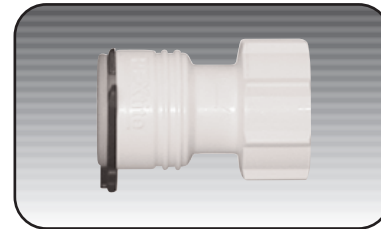
1820 002



1820 003



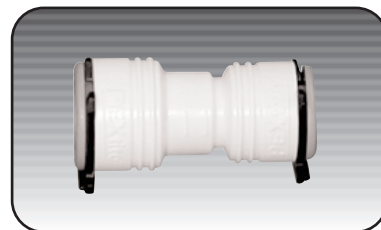
1820 004



1820 005



1820 006



1820 007



91010 256A

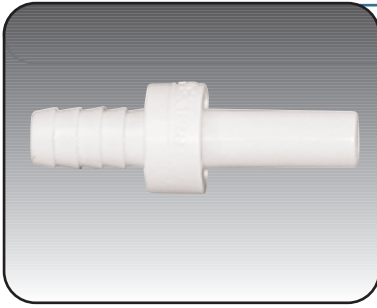
# PEXtite® - Adapter Fittings



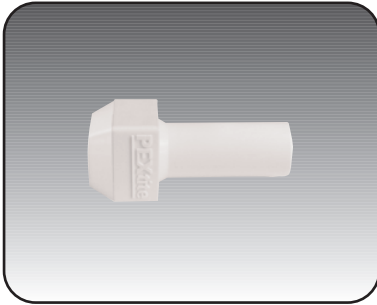


# PEXtite® - Slip-Stem Fittings

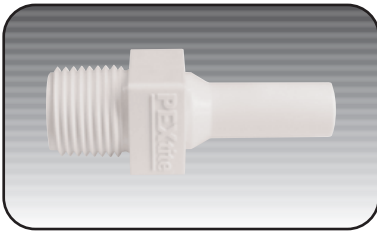
## Slip-stem Fittings



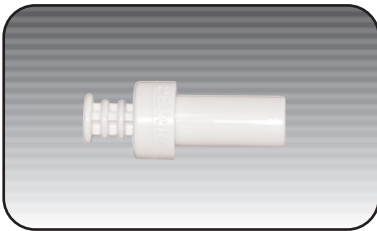
1815 000



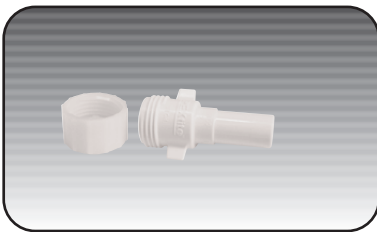
1815 002



1815 004



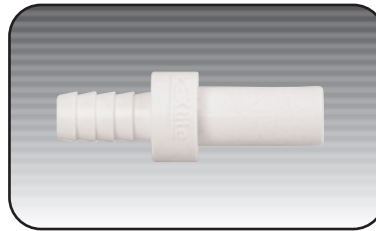
1825 003



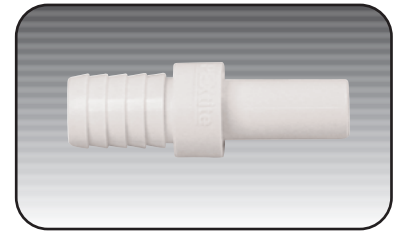
1825 006

Tube size	Description	Part #	Pkg	Ctn	Bulk
3/8" I.D.	1/2" O.D. Slip-stem x 1/2" Hose Barb	1815 000	2	10	24
3/8" I.D.	1/2" O.D. Slip-stem x 1/4" NPT (f) Ice Maker	1815 002	1	10	12
3/8" I.D.	1/2" O.D. Slip-stem x 1/2" NPT (m)	1815 004	2	10	24
1/2" I.D.	5/8" O.D. Slip-stem x 1/2" Hose Barb	1825 000	2	10	24
1/2" I.D.	5/8" O.D. Slip-stem x 3/4" Hose Barb	1825 001	2	10	24
1/2" I.D.	5/8" O.D. Slip-stem x Plug	1825 003	2	10	12
1/2" I.D.	5/8" O.D. Slip-stem x 1/2" NPT (m)	1825 004	2	10	24
1/2" I.D.	5/8" O.D. Slip-stem x 3/4" NPT (m)	1825 005	2	10	24
1/2" I.D.	5/8" O.D. Slip-stem x 3/4" Male GH	1825 006	2	10	24
1/2" I.D.	5/8" O.D. Slip-stem x 15mm Slip-stem	1825 015	2	10	12
1/2" I.D.	5/8" O.D. Slip-stem x 22mm Slip-stem	1825 022	2	10	12

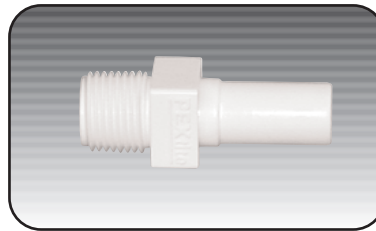
Package Options - Add suffix to part number: A - Display, retail package (i.e. 1812 000A)  
B - Bulk, OEM package of 24 (i.e. 1812 000B) C - Commercial, plastic bag (i.e. 1812 000C)



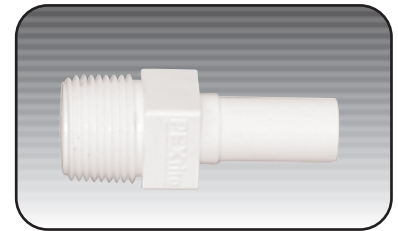
1825 000



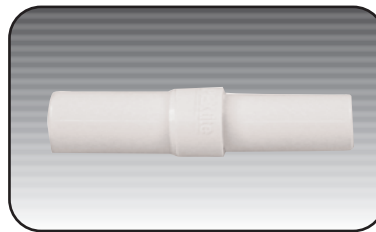
1825 001



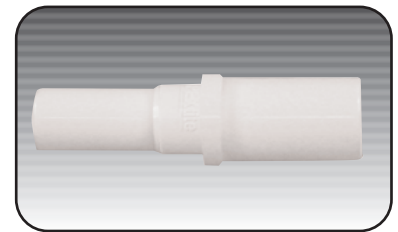
1825 004



1825 005



1825 015



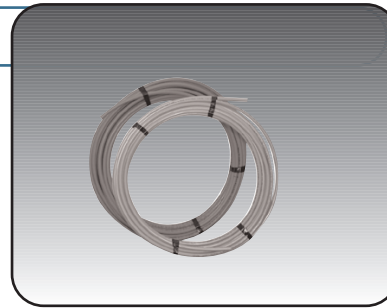
1825 022



## PEXtite® Coiled Tubing\*

(Red-hot; Blue-cold; White-general purpose)

Tube size	Description	Part #	Min.	Cs/Pallet
3/8" I.D.	3/8" I.D. x 100 Ft. Coil, White	W1818 100	1	40
3/8" I.D.	3/8" I.D. x 500 Ft. Coil, White	W1818 500	1	12
1/2" I.D.	1/2" I.D. x 100 Ft. Coil, White	W1828 100	1	30
1/2" I.D.	1/2" I.D. x 100 Ft. Coil, Red	R1828 100	1	30
1/2" I.D.	1/2" I.D. x 100 Ft. Coil, Blue	B1828 100	1	30
1/2" I.D.	1/2" I.D. x 300 Ft. Coil, White	W1828 300	1	12
1/2" I.D.	1/2" I.D. x 300 Ft. Coil, Red	R1828 300	1	12
1/2" I.D.	1/2" I.D. x 300 Ft. Coil, Blue	B1828 300	1	12
1/2" I.D.	1/2" I.D. x 1000 Ft. Coil, White	W1828 1000	1	7



**\*Caution:**  
Use only smooth- OD PEXtite® coiled tubing such as PEXtite® or CSA Listed PEX tubing.

Fitting	Operating Pressure	Operating Temperature	Burst Pressure
PEX Tubing, 3/8" SDR 9	160 psi @ 73.4°F	-20°F to 180°F	620 psi @ 73.4°F
	100 psi @ 180°F		275 psi @ 180°F
	80 psi @ 200°F		
PEX Tubing, 1/2" SDR 9	160 psi @ 73.4°F	-20°F to 180°F	480 psi @ 73.4°F
	100 psi @ 180°F		215 psi @ 180°F
	80 psi @ 200°F		

Tubing manufactured and listed to CSA B5137.5, meets ASTM F876 & F877; certified to NSF 14 & 61; and conforms to IAPMO.

**Life Test Specification:**  
3/8" ID=250 psi (17.2 bar) @ 180°F (82°C) and 1/2"=195 psi (13.4 bar) @ 180°F (82°C) for 1000 hours minimum.

## PEXtite® Straight Pipe\*

Tube size	Description	Part #	Min.	Bulk
1/2" I.D.	1/2" I.D. x 5 Ft. Pipe, Blue	B1829005C	4	24
1/2" I.D.	1/2" I.D. x 5 Ft. Pipe, Red	R1829005C	4	24
1/2" I.D.	1/2" I.D. x 5 Ft. Pipe, White	W1829005C	4	24
1/2" I.D.	1/2" I.D. x 10 Ft. Pipe, Blue	B1829010C	4	24
1/2" I.D.	1/2" I.D. x 10 Ft. Pipe, Red	R1829010C	4	24
1/2" I.D.	1/2" I.D. x 10 Ft. Pipe, White	W1829010C	4	24
1/2" I.D.	1/2" I.D. x 20 Ft. Pipe, Blue	B1829020C	5	25
1/2" I.D.	1/2" I.D. x 20 Ft. Pipe, Red	R1829020C	5	25
1/2" I.D.	1/2" I.D. x 20 Ft. Pipe, White	W1829020C	5	25

**\*Caution:**  
Use only smooth- OD PEXtite® pipe such as PEXtite® or CSA Listed PEX tubing.

## Lock Clip

Tube size	Description	Part #	Pkg	Ctn	Bulk
3/8" I.D.	3/8" I.D. Fitting Lock Clip	1870 001	6	10	24
1/2" I.D.	1/2" I.D. Fitting Lock Clip	1870 002	6	10	24

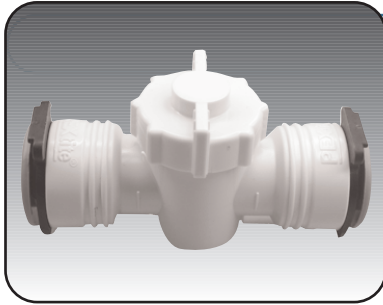


**Package Options - Add suffix to part number:**  
A – Display, retail package (i.e. 1812 000A)  
B – Bulk, OEM package 24 (i.e. 1812 000B)  
C – Commercial, plastic bag (i.e. 1812 000C)

# PEXtite® - Tubing, Pipe & Clips



**PEXtite® - Valves & Accessories**



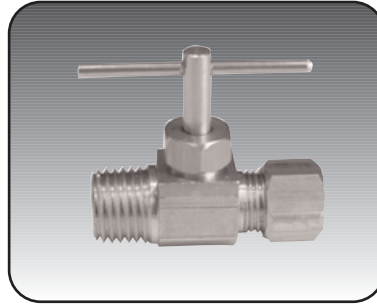
1882 000

**Straight PEXtite® Stop Valves (1/4 Turn Valves)**

Description	Part #	Pkg	Ctn	Bulk
5/8" OD x 5/8" OD (1/2" PEX) Stop Valve	1882 000	1	10	10
5/8" OD x 1/2" OD (1/2" x 3/8" PEX) Reducing Stop Valve	1882 007	1	10	10
1/2" NPT (m) Brass Check Valve	1883 000	1	10	10
1/4" NPT (m) x 1/4" OD Comp. Ice-maker valve	1884 000	1	10	10
1/4" NPT (m) x 1/4" OD Comp. 90° Ice-maker valve	1884 010	1	10	10



1883 000



1884 000



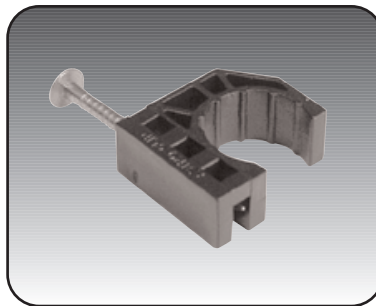
1890 000

**PEXtite® Accessories**

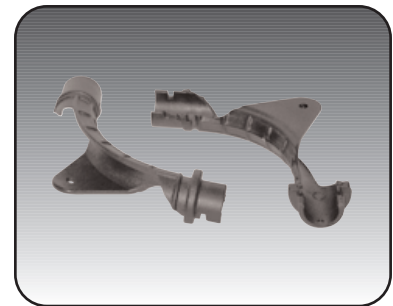
Description	Part #	Pkg	Ctn	Bulk
3/8"-1/2" I.D. Tube Cutter	1890 000	1	6	-
Cutter Replacement Blade	1890 001	1	-	-
3/8"-1/2" I.D. Plastic "U" Nails	1890 010	10	10	50
Plastic Bend Support, 3/8" Rigid 90° bend & sleeve	1891 004	1	10	25
Plastic Straight - thru Support, 1/2" PEX Tubing	1892 002	10	10	100
Plastic Clamp, 1/2" PEX Tubing	1892 003	10	10	100
Plastic Bend Support, 1/2" Rigid 90° bend & sleeve	1892 005	1	10	25
Plastic PEX Rail 6.5' 1892 008	16	-	16	-



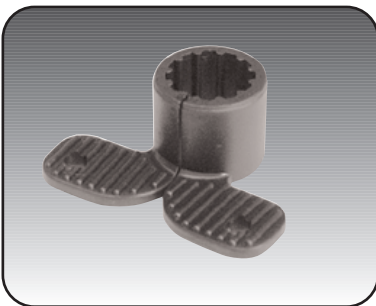
1890 001



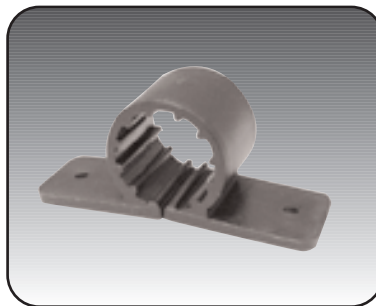
1890 010



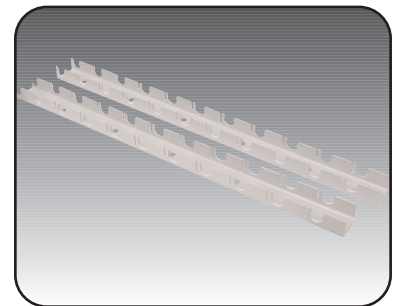
1891 004/1892 005



1892 002



1892 003



1892 008





## The PEXtite® Manifold System Advantage

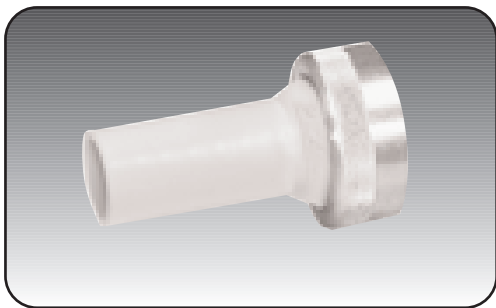
Many manufacturers prefer the single-point distribution system approach. The PEXtite® Manifold offers this benefit to the manufacturer.

- PEXtite® Manifolds allow distribution from one, multi-valve location.
- Water source is connected to the manifold and individual PEX lines feed each fixture.
- Every PEX line is controlled by a shut-off valve built into each manifold port.
- Attach 1/2" ID inlet and either 1/2"ID or 3/8" ID outlet lines as required.
- Red and Blue colored valve indicators for hot and cold manifolds.
- Single delivery point, better control and fewer fittings.
- Often eliminates all hidden connections.
- Fixture identification labels and mounting brackets included.

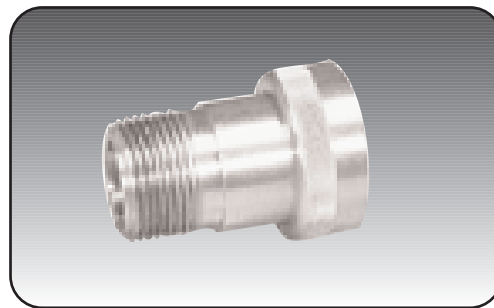
## PEXtite® Valve-bloc

Description	Part #	Pkg	Bulk
Single bloc - 1/2" inlet, 3 outlet valves	1888 103	1	6
Single bloc - 1/2" inlet, 5 outlet valves	1888 105	1	6
Single bloc - 1/2" inlet, 8 outlet valves	1888 108	1	6
Single bloc - 1/2" inlet, 10 outlet valves	1888 110	1	6
1/2" Inlet replacement part	1888 010	1	6
Manifold union (not pictured)	1888 011	1	1
3/4" NPT (m) inlet	1888 020	1	6

Order separate manifold for hot & cold lines.  
Special requirements will be addressed, please call the factory: 1 800 235-6538



1888 010



1888 020

**PEXtite® - Manifold System**



PEXtite® - Dealer Package

1800 000C PEXtite® Dealer Package, Initial Inventory Package

Page #	Description	Includes:	Qty
21	3/8" I.D. Equal PEX Tee	1812 000C	10
21	1/2" I.D. Equal PEX Tee	1822 000C	10
21	1/2" PEX x 1/2" Slip-stem x 1/2" PEX Manifold Tee	1822 008C	10
21	3/8" I.D. Equal PEX Elbow	1811 000C	10
21	1/2" I.D. Equal PEX Elbow	1821 000C	10
22	3/8" I.D. PEX x 1/2"-14 (f) pipe	1810 002C	10
22	3/8" I.D. PEX x 1/2" NPT (m)	1810 003C	10
22	1/2" I.D. Equal PEX Coupler	1820 000C	10
22	1/2" I.D. PEX x 1/2"-14 (f) pipe	1820 002C	10
22	1/2" I.D. PEX x 1/2" NPT (m)	1820 003C	10
22	3/8" I.D. PEX x 1/2" I.D. PEX Coupler	1820 007C	10
23	3/8" Slip-stem x 1/2" Hose Barb	1815 000C	10
23	3/8" Slip-stem x 1/2" NPT (m)	1815 004C	10
23	1/2" Slip-stem x 1/2" Hose Barb	1825 000C	10
23	1/2" Slip-stem x 3/4" Hose Barb	1825 001C	10
23	1/2" Slip-stem x 1/2" NPT (m)	1825 004C	10
23	1/2" Slip-stem x 3/4" NPT (m)	1825 005C	10
23	1/2" Slip-stem x 15mm OD Converter, 2 ea.	1825 015C	10
23	1/2" Slip-stem x 22mm OD Converter, 2 ea.	1825 022C	10
24	3/8" I.D. Fitting Lock Clip, 6 ea.	1870 001C	10
24	1/2" I.D. Fitting Lock Clip, 6 ea.	1870 002C	10
25	3/8"-1/2" I.D. Tube Cutter	1890 000C	1
25	Cutter Replacement Blade	1890 001C	1

1800 001C PEXtite® Dealer Package, Initial 1/2" Fitting Package

Page #	Description	Includes:	Qty
21	1/2" I.D. Equal PEX Tee	1822 000C	10
21	1/2" PEX x 1/2" Slip-stem x 1/2" PEX Manifold Tee	1822 008C	10
21	1/2" I.D. Equal PEX Elbow	1821 000C	10
22	1/2" I.D. Equal PEX Coupler	1820 000C	10
22	1/2" I.D. PEX x 1/2"-14 (f) pipe	1820 002C	10
22	1/2" I.D. PEX x 1/2" NPT (m)	1820-003C	10
23	1/2" Slip-stem x 1/2" Hose Barb	1825 000C	10
23	1/2" Slip-stem x 3/4" Hose Barb	1825 001C	10
23	1/2" Slip-stem x 1/2" NPT (m)	1825 004C	10
23	1/2" Slip-stem x 3/4" NPT (m)	1825 005C	10
23	1/2" Slip-stem x 15mm OD Converter, 2 ea.	1825 015C	10
23	1/2" Slip-stem x 22mm OD Converter, 2 ea.	1825 022C	10
24	1/2" I.D. Fitting Lock Clip, 6 ea.	1870 002C	10
25	3/8"-1/2" I.D. Tube Cutter	1890 000C	1
25	Cutter Replacement Blade	1890 001C	1

Limited Lifetime Warranty

The PEXtite® Plumbing System is covered by a Limited Lifetime Warranty for as long as you own the boat or recreation vehicle (property) in which the system is installed.

The Lifetime Warranty applies only to the PEXtite® fittings and cross-linked polyethylene tubing (PEX), clearly marked with the PEXtite® logo. Any accessory or fixture not clearly marked with the PEXtite® logo falls outside this limited warranty and is not covered by this limited warranty.

The installation of the fittings and tubing must be in accordance with the applicable codes and guidelines such as, but not limited to RVIA (ANSI A119.2), ABYC, and the PEXtite® technical installation and operating instructions.

A claim against this limited warranty must be filed in writing within 90 days of the occurrence, and inspection by a PEXtite® agent must be made possible by the claimant as required by ITT/Flojet. An inspection may only be waived by ITT/Flojet .

EXCLUSIONS

Exclusions include the use of the product outside the intended use as a fresh or raw water system in a boat or recreation vehicle. Industrial, chemical and all other applications may or may not be covered under another limited warranty. Please contact ITT/Flojet for more information: 1 800 2-FLOJET.



# Product Number Index

Product	Page	Product	Page	Product	Page	Product	Page
320	18	1825 015	23	20408 000	3,5,6	91010 256A	22
321	18	1825 022	23	20409 043	1,3,4,5,6	B1819 020	24
350	18	18550 1000	9	20419 001	3	B1828 100	24
413	19	18550 1001	9	20419 002	5,6	B1828 300	24
805-Q	19	18550 1010	9	3406143	2	B1829 020	24
830	19	1821 008	22	3406343	2	8035 100	12
1821 004	21	18555 000A	9	3416143	2	8135 100	12
01750 045	10	18690 1000	9	20420 040	10	8046 100	12
01750 145	10	1870 001	24	20796 000A	6	8055 100	12
01750 245	10	1870 002	24	20799 000A	6	BW1000A	16
01751 145	10	1881 000	25	2090 104	3	BW3000A	16
01751 245	10	18810-0000	8	2090 118	5	C100	17
01770 100	1	1882 000	25	2100 014A	15	C101	17
017885 000A	15	1882 007	25	2100-12	4	C102	17
02009 004C	4	1883 000	25	2100-740	4	C103	17
02009 004C	4	1884 000	25	2100-916	4	LF122 002	2
02009 008A	4	1884 010	25	2100-919	4	LF122 202	2
02009 043A	4	1888 010	26	21046-057	4	R1819 020	24
02019 001A	4	1888 011	26	21046-121	4	R1828 100	24
02090 118	6	1888 020	26	21046-187	4	R1828 300	24
02095 105	4	1888 103	26	2840 000	6	R1829 020	24
02095 108	4	1888 105	26	2840 100	6	R2580 100A	1
03526 144	2	1888 108	26	2840 110	6	R2580 300A	1
04306 500	3	1888 110	26	2840 120	6	R3426 148	2
04406 043	3	1890 000	25	2840 300	6	R3426-348	2
04406 143	3	1890 001	25	30004-0000	7	R3526 344	2
08035 100	12	1890 010	25	30015-0000	7	R4306 501	3
08046 100	12	1891 004	25	30022-0000	7	R4406 343	3
08055 100	12	1892 002	25	30033-0000	7	R4515 743A	1
08055 200	12	1892 003	25	30123-0000	7	R4525 743A	1
08135 100	12	1892 005	25	30126-0000	7	R6806 145	1
12573-0000	8	1892 008	25	30200-0000	7	R6806 345	1
1740 000	10	2009 076	3	30201-0000	7	V14	20
1740 002	10	2009 080A	5	30573 0001	8	V16	20
1740 003	10	2009 087A	5	30573 0004	8	V20	20
1740 004	10	20095 103	4	34344-0000	9	V20R	20
1740 010	10	2019 024A	3	35471 0000	9	V20R-24	20
1740 012	10	2019 027A	5	35620 1100	7	V33	20
1740 014	10	2029 087A	3	36950 2000	7	V33R	20
1740 375	10	2029 091A	5	36950 2010	7	V42	20
1740 900	10	20381 000	28	37075-0092	9	V42R	20
1800 000	27	20381 002	28	37075-0094	9	W104	20
1800 001	27	20381 003	28	37075-1092	9	W107	20
1810 003	22	20381 006	28	37075-1094	9	W114	20
1810 005	22	20381 007	28	37075-3092	9	W118PK	20
1810 006	22	20381 008	11	37075 3094	9	W-131C	20
1811 000	21	20381 009	11	37121 0000	7	W139	20
1811 002	21	20381 010	11	37121 0010	7	W1818 100	24
1811 003	21	20381 012	11	37176 0000	7	W1818 500	24
1812 000	21	20381 013	11	37178 0000	7	W1828 100	24
1815 000	23	20381 014	11	42510-0000	5	W1828 1000	24
1815 002	23	20381 015	11	42520-0000	5	W1828 300	24
1815 004	23	20381 016	11	42530-0000	5		
1820 000	22	20381 017	11	4305 144A	4		
1820 001	22	20381 018	11	4325 043	5		
1820 002	22	20381 019	11	4325 143	5		
1820 003	22	20381 020	11	4325 343	5		
1820 004	22	20381 022	6	43990 0013	13		
1820 005	22	20381 024	11	43990 0014	13		
1820 006	22	20381 026	11	43990 0015	13		
1820 007	22	20381 031	11	43990 0016	13		
1821 000	21	20381 032	11	43990-0061	7		
1821 001	21	20381 033	11	43990-0064	7		
1821 002	21	20381 034	11	44114-1100	7		
1821 003	21	20381 036	11	44127-1000	7		
1822 000	21	20403 040	3,5	45900 1000	14		
1822 007	21	20404 000	3	45903 0002	14		
1822 008	21	20404 003	5,6	45960 0000	14		
1825 000	23	20404 009	3	45960 0001	14		
1825 001	23	20406 001A	3	59500-0012	15		
1825 003	23	20406 002A	5,6	59500-0024	15		
1825 004	23	20406 008A	3	62022-4002	13		
1825 005	23	20406 040A	2	62026-4002	13		
1825 006	23	20407 030	3,5,6	63042 0062	13		